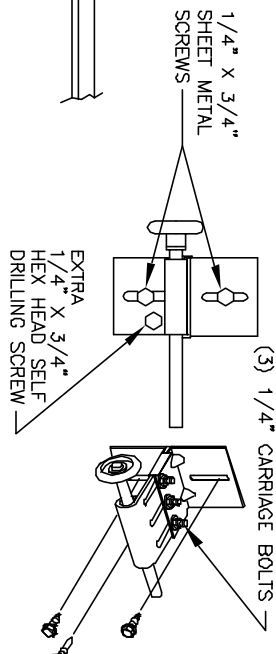


3/4" X 1-1/2" X 13GAGE MIN. GALV. STEEL HORIZONTAL ANGLE.
 2" GALV. STEEL HORIZONTAL TRACK 16 GAGE OR 13 GAGE BASED ON THE WEIGHT OF THE DOOR.

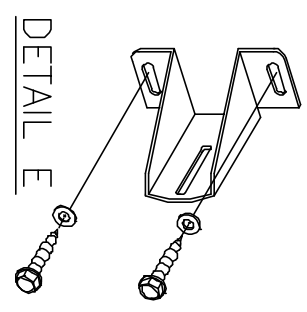


DETAIL D

(3) 1/4" CARRIAGE BOLTS
 1/4" X 3/4" SHEET METAL SCREWS

13 GAGE MIN. GALV. STEEL TRACK SPLICE OR FLAG BRACKET. FASTEN TO WOOD JAMB WITH 5/16" X 1-1/2" LAG SCREWS.

OPENING HEIGHT (NOT OVER DOOR HEIGHT)



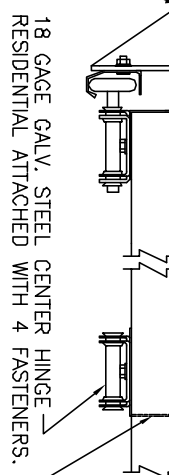
DETAIL E

3 BRACKETS EACH SIDE

1/2" POLYSTYRENE INSULATION STANDARD FOR MODEL 735

20GA. END STILES FASTENED TO PANEL WITH TOG-L-LOCKS. USE END CAP OVER END STILES. (SEE DETAIL B)

STOP MOLDING NAILED EVERY 6" 6-D TYPE NAIL MIN.

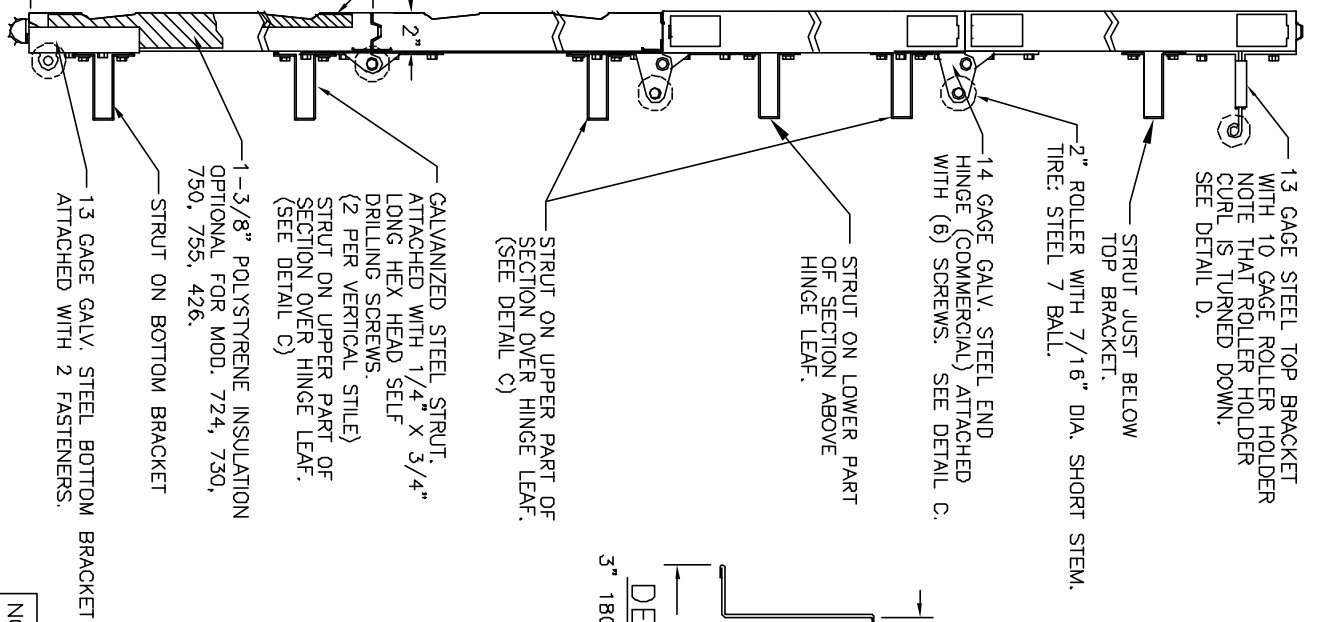


13 GAGE GALV. STEEL TRACK BRACKETS, SEE ABOVE FOR QUANTITY AND SPACING, FASTENED TO WOOD JAMBS WITH 5/16" X 1-1/2" LAG SCREWS & WASHERS. PREPARATION OF JAMBS BY OTHERS. SEE DETAIL E.

SECTION B-B

NOTE: UNLESS SPECIFIED OTHERWISE, ALL FASTENERS ARE 1/4"-14 X 3/4" HEX HEAD SHEET METAL SCREWS OR 1/4"-20 X 5/8" HEX BOLTS AND NUTS.

SECTION A-A



13 GAGE STEEL TOP BRACKET WITH 10 GAGE ROLLER HOLDER CURL IS TURNED DOWN. SEE DETAIL D.

STRUT JUST BELOW TOP BRACKET.

2" ROLLER WITH 7/16" DIA. SHORT STEM. TIRE: STEEL 7 BALL.

14 GAGE GALV. STEEL END HINGE (COMMERCIAL) ATTACHED WITH (6) SCREWS. SEE DETAIL C.

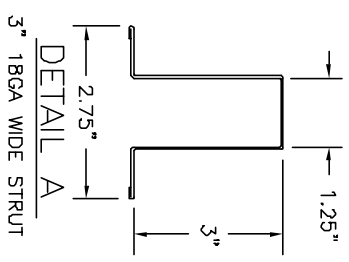
STRUT ON LOWER PART OF SECTION ABOVE HINGE LEAF.

STRUT ON UPPER PART OF SECTION OVER HINGE LEAF. (SEE DETAIL C)

GALVANIZED STEEL STRUT, ATTACHED WITH 1/4" X 3/4" LONG HEX HEAD SELF DRILLING SCREWS. (2 PER VERTICAL STILE) STRUT ON UPPER PART OF SECTION OVER HINGE LEAF. (SEE DETAIL C)

1-3/8" POLYSTYRENE INSULATION OPTIONAL FOR MOD. 724, 730, 750, 755, 426.

STRUT ON BOTTOM BRACKET ATTACHED WITH 2 FASTENERS.

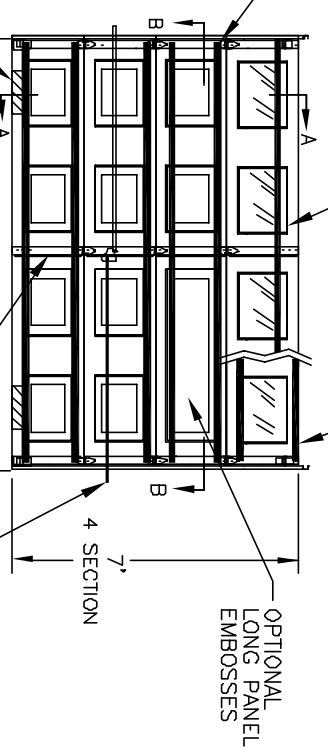


DETAIL A

NOTE: DOOR MUST BE INSTALLED WITH EITHER AN ELECTRIC OPERATOR OR A LOCK (MUST ENGAGE BOTH TRACKS ON DOORS WITH EXTENSION SPRINGS).

6 STRUTS 3" 18GA WIDE (SEE DETAIL A)

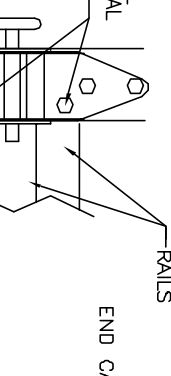
OPTIONAL SSB GLASS LIGHTS ALTERNATE CONSTRUCTION USING (2) STRUTS



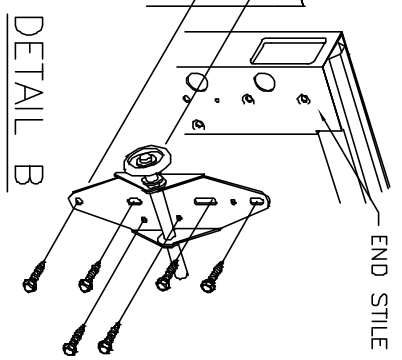
OPTIONAL: 4" X 16" AIR VENTS (2) REQ'D. (60 SQ. IN. MIN. TOTAL OPEN AREA)

9' (SINGLE CAR) CENTER STILE & HINGES (1 COLUMN) OPTIONAL LOCK

USE TWO EXTRA SELF-DRILLING SCREWS THROUGH LEAF OF HINGE END STILES & RAIL AS SHOWN. TYPICAL EACH END HINGE.



DETAIL C



DETAIL B

NOTE: GLAZING DOES NOT SATISFY IMPACT DEBRIS REQUIREMENTS IN FBC

FL 15080

9 X 7

P.S.F. TABLE

DOOR SIZE	DESIGN PRESSURE		TEST PRESSURE	
	WIDTH	HEIGHT	POSITIVE	NEGATIVE
9'-0"	7'-0"	+42.6	-48.9	+63.9
				-73.4

DOORS SHOWN ON THIS DRAWING HAVE BEEN DEMONSTRATED TO WITHSTAND THE PRESSURES LISTED IN THE TABLE ABOVE VIA TESTING TO ANSI/DASMA 108-05.

DETERMINATION OF SUITABILITY FOR SPECIFIC SITES IS THE RESPONSIBILITY OF OTHERS.

John E. Scates PE
 3121 FAIRGATE DR.
 Carrollton, TX 75007
 TX-PE 56308-F-2203
 FL-PE-51737
 (972) 492-9500

Professional Engineer's seal provided only for verification of windload construction details.

WINDSOR DOOR

P.O. BOX 8915
 LITTLE ROCK, AR
 72219-8915
 (501) 562-1872

MODELS: 724, 426, 730, 735, 750, 755

PART NAME: WINDLOAD RESIDENTIAL PAN DOOR
 W3 C

REV.	E.C.N.	DATE	APPROV.
C		12/15/11	RLB
B		3-10-08	RLB
A		11-1-07	RLB
		3-8-07	RLB

SCALE	PLOT SCALE	DRN BY	DWG. NO.
NONE		BH	99-B-083

SHEET 1 OF 4

3/4" X 1-1/2" X 13GAGE MIN. GALV. STEEL HORIZONTAL ANGLE.

2" GALV. STEEL HORIZONTAL TRACK 16 GAGE OR 13 GAGE BASED ON THE WEIGHT OF THE DOOR.

13 GAGE MIN. GALV. STEEL TRACK SPLICE OR FLAG BRACKET. FASTEN TO WOOD JAMB WITH 5/16" X 1-1/2" LAG SCREWS.

2" 16 GAGE GALV. STEEL VERTICAL TRACK BOLTED TO TRACK BRACKETS WITH 1/4"-20 X 5/8" TRACK BOLTS.

1/4" X 3/4" SHEET METAL SCREWS

EXTRA 1/4" X 3/4" HEX HEAD SELF-DRILLING SCREW

(3) 1/4" CARRIAGE BOLTS

13 GAGE STEEL TOP BRACKET WITH 10 GAGE ROLLER HOLDER NOTE THAT ROLLER CURL IS TURNED DOWN. SEE DETAIL D.

STRUT JUST BELOW TOP BRACKET.

2" ROLLER WITH 7/16" DIA. SHORT STEM. TIRE: STEEL 7 BALL.

14 GAGE GALV. STEEL END HINGE (COMMERCIAL) ATTACHED WITH (6) SCREWS. SEE DETAIL C.

STRUTS ON LOWER PART OF SECTION ABOVE HINGE LEAF.

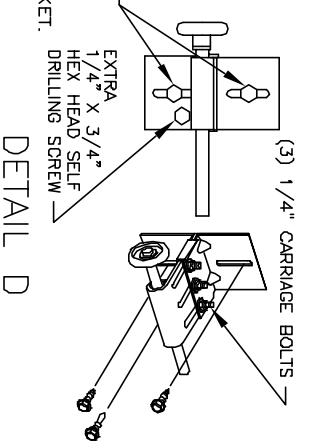
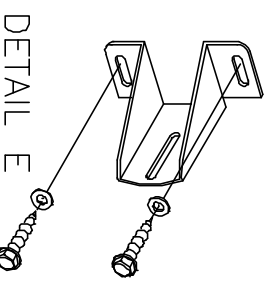
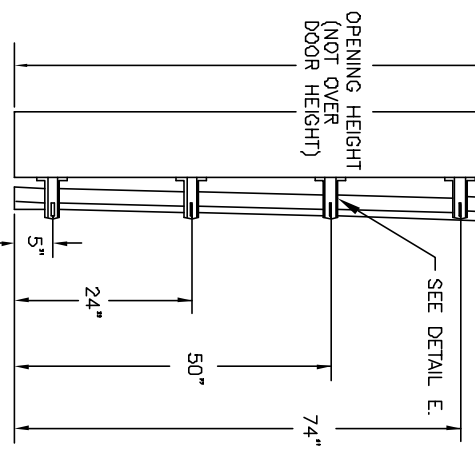
STRUT ON UPPER PART OF SECTION OVER HINGE LEAF. (SEE DETAIL C)

GALVANIZED STEEL STRUT. ATTACHED WITH 1/4" X 3/4" LONG HEX HEAD SELF-DRILLING SCREWS. (2 PER VERTICAL STILE) STRUT ON UPPER PART OF SECTION OVER HINGE LEAF. (SEE DETAIL C)

1-3/8" POLYSTYRENE INSULATION OPTIONAL FOR MOD. 724, 730, 750, 755, 426.

19-1/4" HIGH PANEL PREPAINTED STEEL 25 GAGE ALL MODELS EXCEPT 24 GAGE MODEL 750, 755.

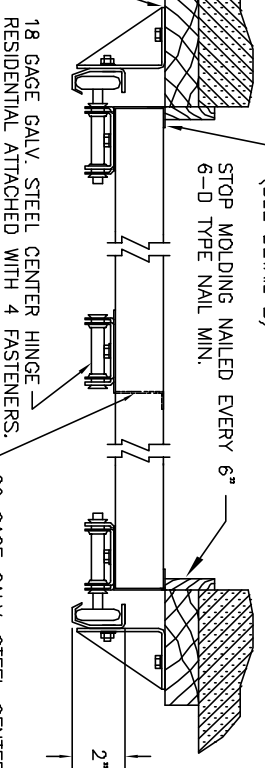
13 GAGE GALV. STEEL BOTTOM BRACKET ATTACHED WITH 2 FASTENERS.



NOTE: UNLESS SPECIFIED OTHERWISE, ALL FASTENERS ARE 1/4"-14 X 3/4" HEX HEAD SHEET METAL SCREWS OR 1/4"-20 X 5/8" HEX BOLTS AND NUTS.

STOP MOLDING NAILED EVERY 6" 6-D TYPE NAIL MIN.

20GA. END STILES FASTENED TO PANEL WITH TOG-L-LOCKS. USE END CAP OVER END STILES. (SEE DETAIL B)



20 GAGE GALV. STEEL CENTER STILE ATTACHED WITH TOG-L-LOCKS OR RIVETS

18 GAGE GALV. STEEL CENTER HINGE RESIDENTIAL ATTACHED WITH 4 FASTENERS.

SECTION B-B

SECTION A-A

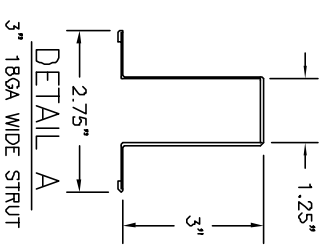
DOOR SIZE	P.S.F. TABLE		TEST PRESSURE	
	DESIGN PRESSURE	POSITIVE	NEGATIVE	POSITIVE
WIDTH	9'-0"	8'-0"	+42.6	-48.9
HEIGHT			+63.9	-73.4

DOORS SHOWN ON THIS DRAWING HAVE BEEN DEMONSTRATED TO WITHSTAND THE PRESSURES LISTED IN THE TABLE ABOVE VIA TESTING TO ANSI/DASMA 108-05.

DETERMINATION OF SUITABILITY FOR SPECIFIC SITES IS THE RESPONSIBILITY OF OTHERS.

Professional Engineer's seal provided only for verification of windload construction details.

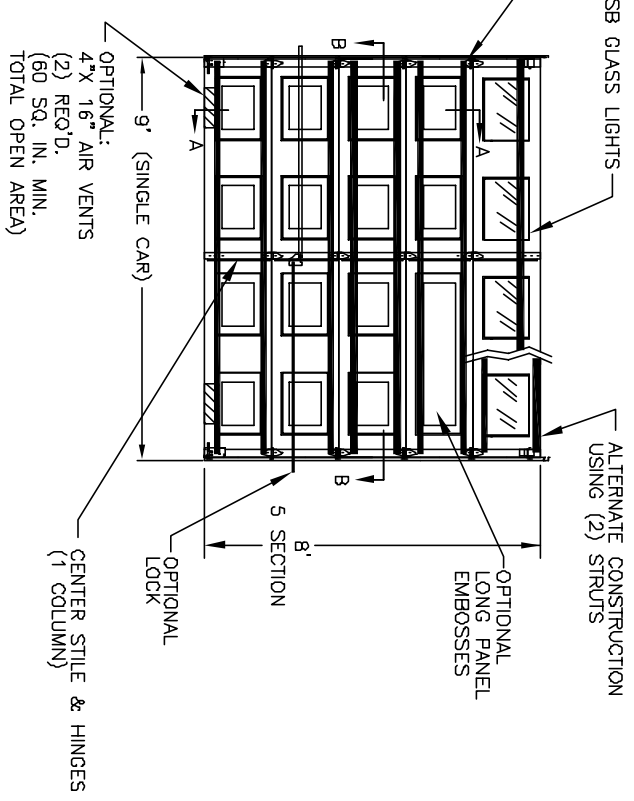
John E. Scoters PE
3121 FAIRGATE DR.
Carrollton, TX 75007
TX-PE 56308-F-2203
FL-PE 51737
(972) 492-9500



NOTE: DOOR MUST BE INSTALLED WITH EITHER AN ELECTRIC OPERATOR OR A LOCK (MUST ENGAGE BOTH TRACKS ON DOORS WITH EXTENSION SPRINGS).

OPTIONAL SSB GLASS LIGHTS

8 STRUTS (SEE DETAIL A)



ALTERNATE CONSTRUCTION USING (2) STRUTS

OPTIONAL LONG PANEL EMBOSSES

OPTIONAL LOCK

5 SECTION

8' SECTION

OPTIONAL CENTER STILE & HINGES (1 COLUMN)

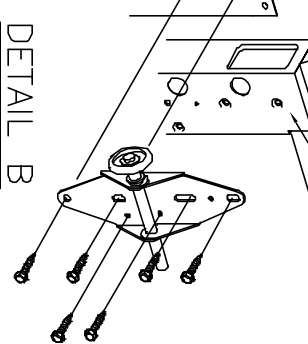
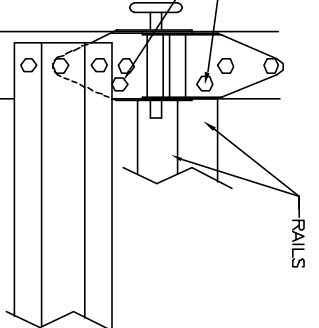
OPTIONAL: 4" X 16" AIR VENTS (2) REQ'D. (60 SQ. IN. MIN. TOTAL OPEN AREA)

9" (SINGLE CAR)

END CAP 16GA

END STILE 20GA.

USE TWO EXTRA SELF-DRILLING SCREWS THROUGH LEAF OF HINGE. END STILES & RAIL AS SHOWN. TYPICAL EACH END HINGE.



DETAIL C

DETAIL B

NOTE: GLAZING DOES NOT SATISFY IMPACT DEBRIS REQUIREMENTS IN FBC

FL 15080

9 X 8

W WINDSOR DOOR

P.O. BOX 8915
LITTLE ROCK, AR
72219-8915
(501) 562-1872

MODELS: 724, 426, 730, 735, 750, 755

PART NAME: WINDLOAD RESIDENTIAL PAN DOOR
W3 C

REV.	E.C.N.	DATE	APPROV.	SCALE	PLOT SCALE	DRN. BY	DWG. NO.
				NONE		BH	99-B-083
							SHEET 2 OF 4

DATE: 2/27/07

DATE: 3-8-07

DATE: 12/15/11

DATE: 3-10-08

DATE: 11-1-07

DATE: 2810

DATE: 2/27/07

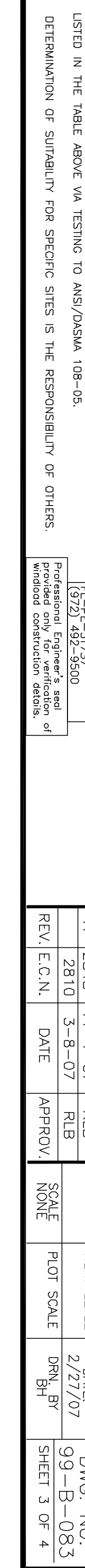
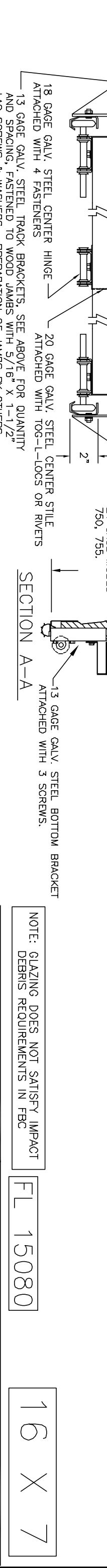
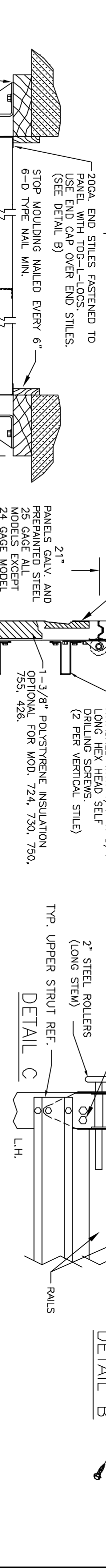
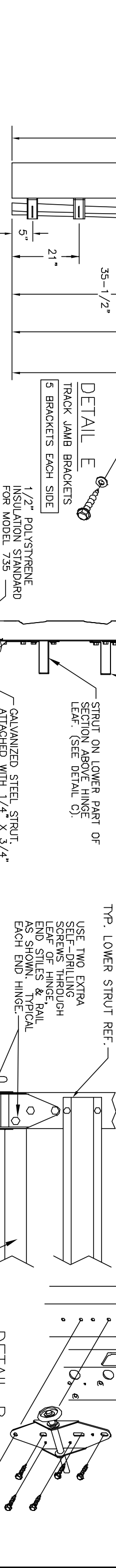
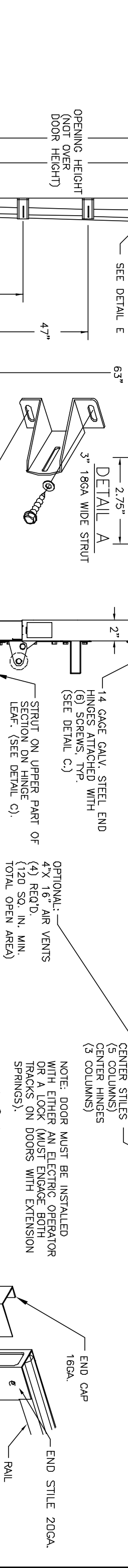
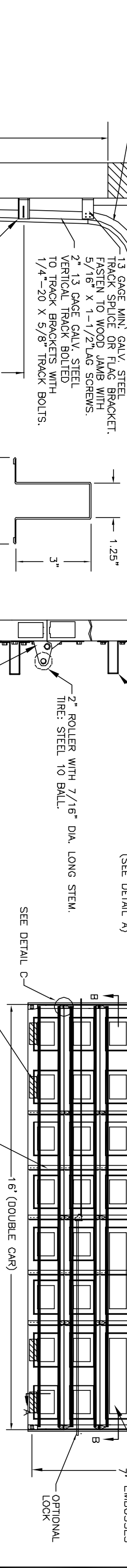
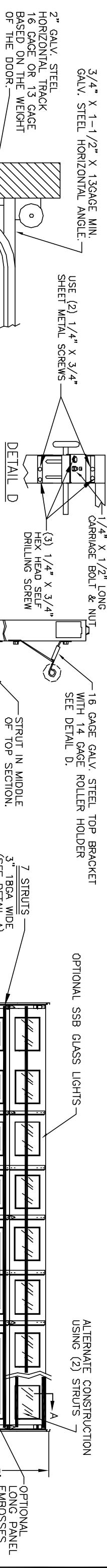
DATE: 3-8-07

DATE: 12/15/11

DATE: 3-10-08

DATE: 11-1-07

DATE: 2810



NOTE: GLAZING DOES NOT SATISFY IMPACT DEBRIS REQUIREMENTS IN FBC

FL 15080

16 X 7

WINDSOR DOOR

P.O. BOX 8915
LITTLE ROCK, AR
72219-8915
(501) 562-1872

MODELS: 724, 426, 730, 735, 750, 755

PART NAME: WINDLOAD RESIDENTIAL PAN DOOR
W3 C

DATE: 2/27/07

DWG. NO. 99-B-083

SCALE NONE

PLOT SCALE

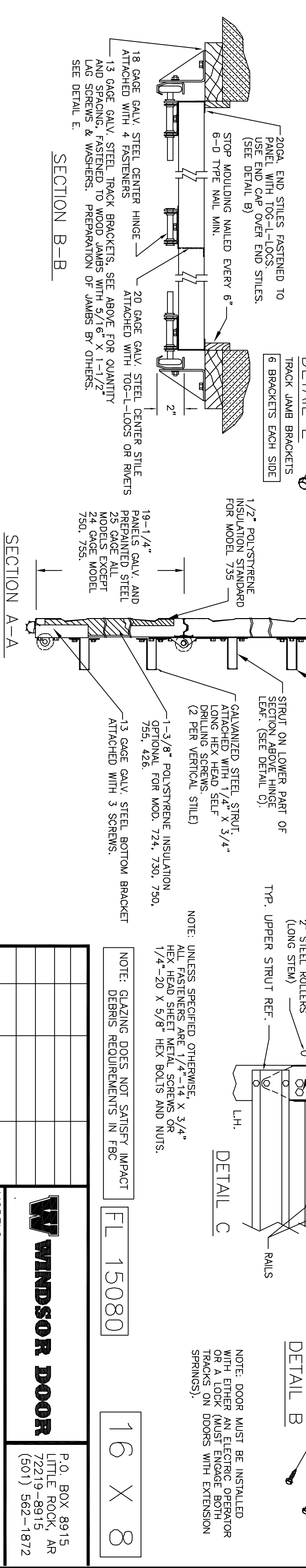
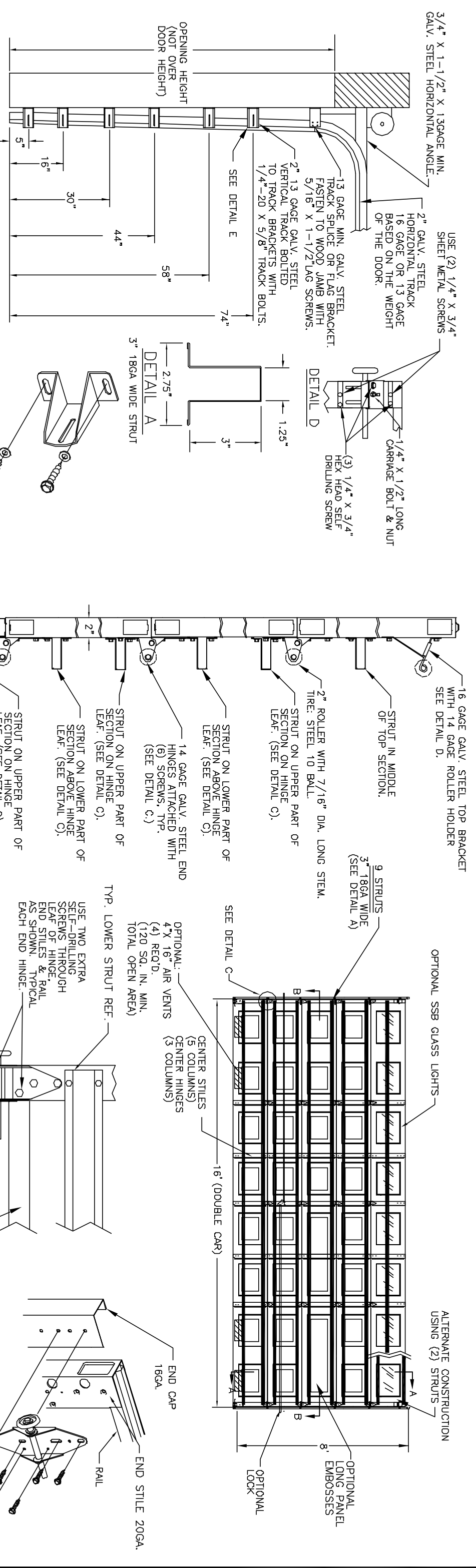
DRN. BY BH

SHEET 3 OF 4

DOORS SHOWN ON THIS DRAWING HAVE BEEN DEMONSTRATED TO WITHSTAND THE PRESSURES LISTED IN THE TABLE ABOVE VIA TESTING TO ANSI/DASMA 108-05.

DETERMINATION OF SUITABILITY FOR SPECIFIC SITES IS THE RESPONSIBILITY OF OTHERS.

John E. Scates, P.E.
3121 FAIRGATE DR.
Carrington, TX 75007
TX-PE 36308-F-2203
FL-PE-51737
(972) 492-9500



DOOR SIZE		DESIGN PRESSURE		TEST PRESSURE	
WIDTH	HEIGHT	POSITIVE	NEGATIVE	POSITIVE	NEGATIVE
16'-0"	8'-0"	+35.3	-38.9	+53.0	-58.4

P.S.F. TABLE		TEST PRESSURE	
POSITIVE	NEGATIVE	POSITIVE	NEGATIVE
+35.3	-38.9	+53.0	-58.4

DOORS SHOWN ON THIS DRAWING HAVE BEEN DEMONSTRATED TO WITHSTAND THE PRESSURES LISTED IN THE TABLE ABOVE VIA TESTING TO ANSI/DASMA 108-05.

DETERMINATION OF SUITABILITY FOR SPECIFIC SITES IS THE RESPONSIBILITY OF OTHERS.

Professional Engineer's seal provided only for verification of windload construction details.

John E. Scotas PE
3121 FAIRGATE DR.
CORRILTON, TX 75007
TX-PE 56308-F-2203
FL-PE-51737
(972) 492-9500

REV.	E.C.N.	DATE	APPROV.	
A		2810	3-8-07	RLB
B		2866	3-10-08	RLB
C			12/15/11	RLB

NOTE: GLAZING DOES NOT SATISFY IMPACT DEBRIS REQUIREMENTS IN FBC

FL 15080

16 X 8

W WINDSOR DOOR

P.O. BOX 8915
LITTLE ROCK, AR
72219-8915
(501) 562-1872

MODELS: 724, 426, 730, 735, 750, 755

PART NAME: WINDLOAD RESIDENTIAL PAN DOOR

W3 C

SCALE NONE

PLOT SCALE

DATE: 2/27/07

DRN. BY BH

DWG. NO. 99-B-083

SHEET 4 OF 4