

SECTION B-B

P.S.F. TABLE		DESIGN PRESSURE	TEST PRESSURE
DOOR SIZE		POSITIVE	NEGATIVE
WIDTH	HEIGHT	POSITIVE	NEGATIVE
9'-0"	7'-0"	+22.9	+34.4
		-26.4	-39.6

NOTE: ALL NON-DESCRIPTIVE FASTENERS SHOWN TO BE 1/4" X 20 X 5/8" HEX BOLTS & NUTS OR 1/4" X 3/4" LONG HEX HEAD SHEET METAL SCREWS.

DOORS SHOWN ON THIS DRAWING HAVE BEEN DEMONSTRATED TO WITHSTAND THE PRESSURES LISTED IN THE TABLE ABOVE VIA TESTING TO ANSI/DASMA 108-05.
DETERMINATION OF SUITABILITY FOR SPECIFIC SITES IS THE RESPONSIBILITY OF OTHERS.

John E. Scates PE
3121 FAIRGATE DR.
Carrollton, TX 75007
TX-PE 56308-F-2203
FL-PE 51737
(972) 492-9500

Professional Engineer's seal provided only for verification of windload construction details.

REV.	E.C.N.	DATE	APPROV.
A		2848 11/1/07	RLB
B		2866 3/10/08	RLB
C		12/15/11	RLB

WINDSOR DOOR

P.O. BOX 8915
LITTLE ROCK, AR
72219-8915
(501) 562-1872

MODEL: 724, 426, 730, 735, 750, 755

PART NAME: WINDLOAD RESIDENTIAL PAN DOOR
W2 B

SCALE: NONE

DATE: 2/27/07

DRN. BY: BH

DATE: 2/27/07

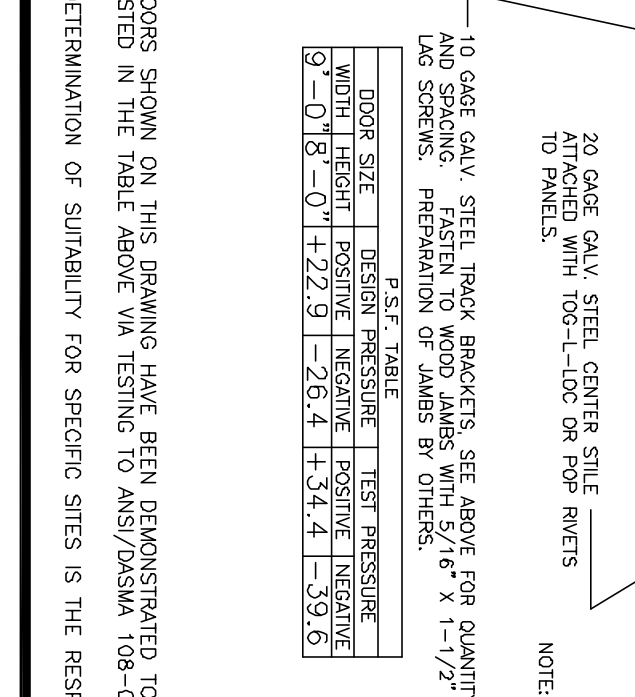
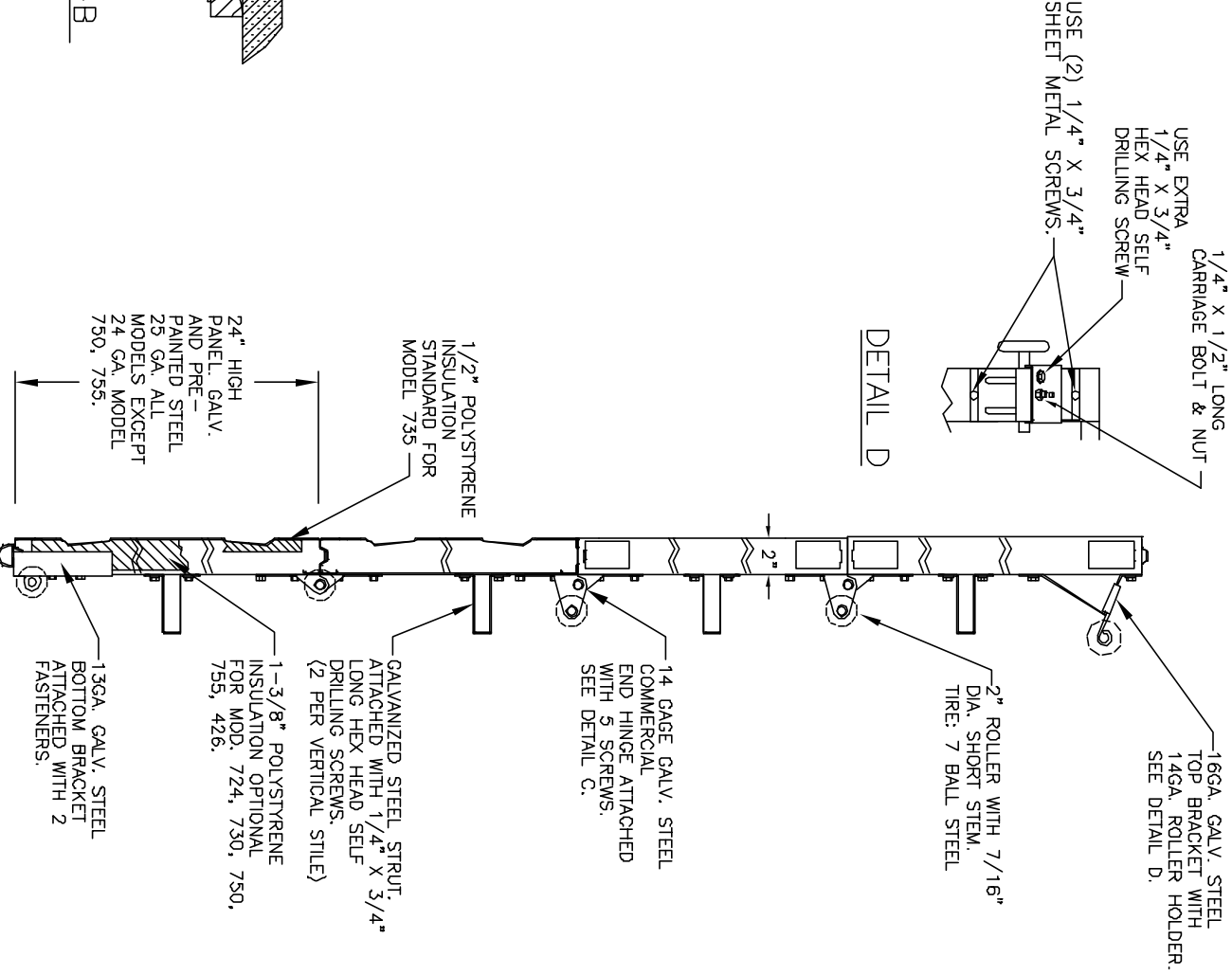
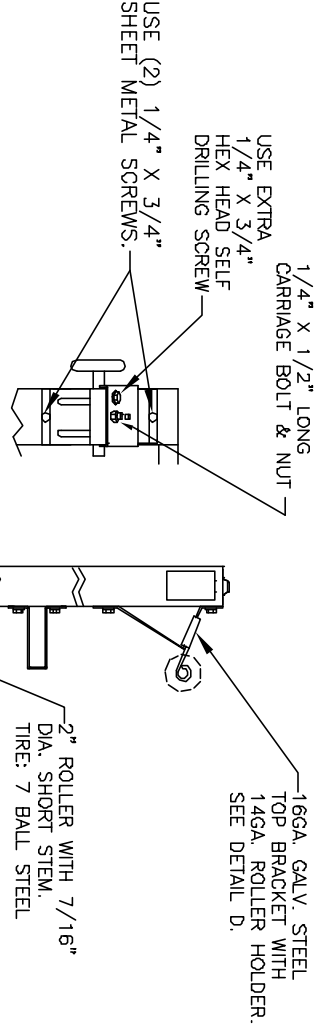
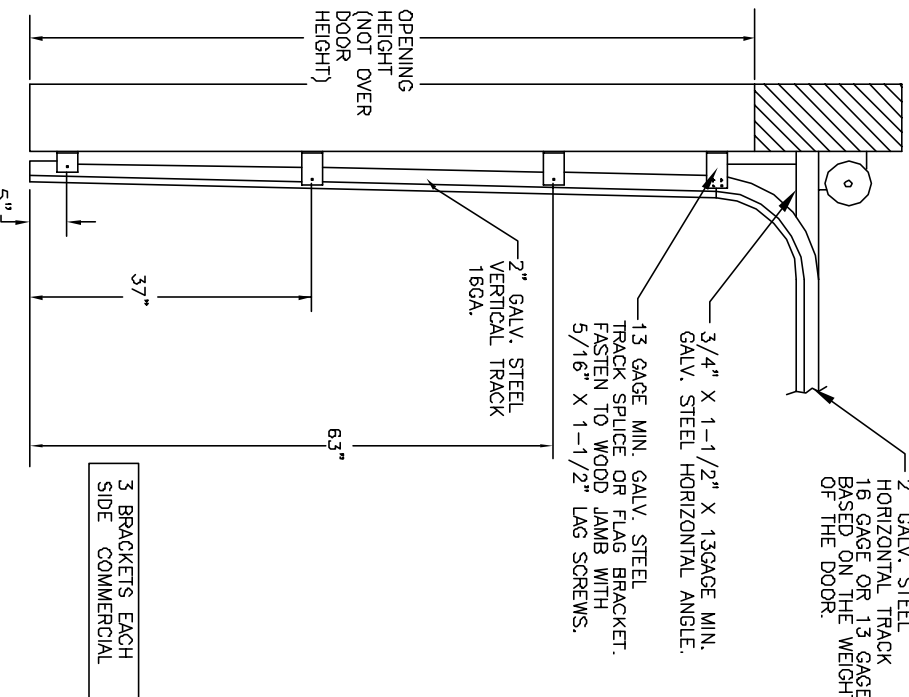
DWG. NO. 99-B-080

SHEET 1 OF 6

FL 15080

9 X 7

NOTE: GLAZING DOES NOT SATISFY IMPACT DEBRIS REQUIREMENTS IN FBC



NOTE: ALL NON-DESCRIPTIVE FASTENERS SHOWN TO BE 1/4" X 3/4" LONG HEX HEAD SHEET METAL SCREWS.

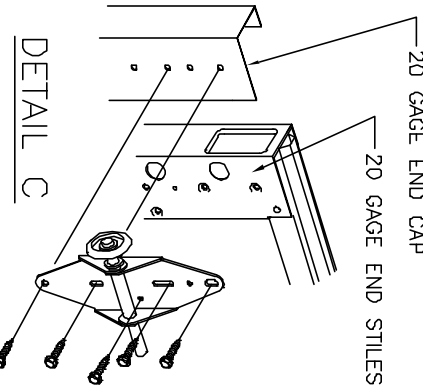
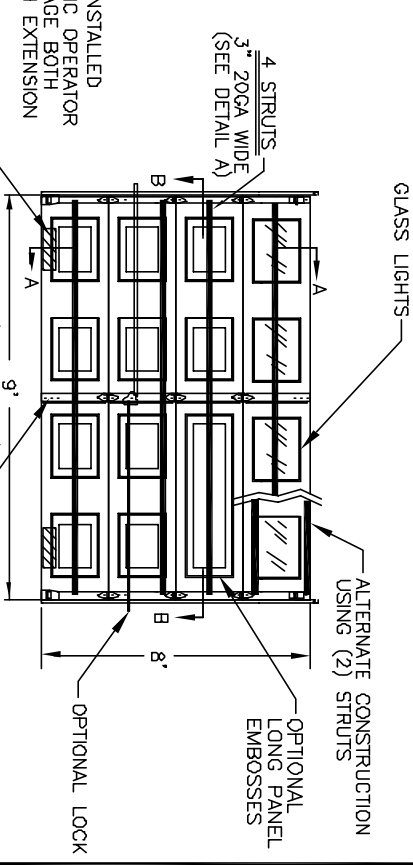
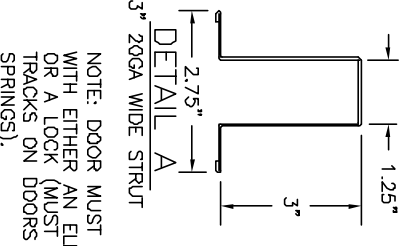
P.S.F. TABLE

WIDTH	HEIGHT	DESIGN PRESSURE		TEST PRESSURE	
		POSITIVE	NEGATIVE	POSITIVE	NEGATIVE
9'-0"	8'-0"	+22.9	-26.4	+34.4	-39.6

DOORS SHOWN ON THIS DRAWING HAVE BEEN DEMONSTRATED TO WITHSTAND THE PRESSURES LISTED IN THE TABLE ABOVE VIA TESTING TO ANSI/DASMA 108-05. DETERMINATION OF SUITABILITY FOR SPECIFIC SITES IS THE RESPONSIBILITY OF OTHERS.

John E. Scates PE
3121 FAIRGATE DR.
CORRILTON, TX 75007
TX-PE 56308-F-2203
FL-PE 51737
(972) 492-9500

Professional Engineer's seal provided only for verification of windload construction details.



NOTE: DOOR MUST BE INSTALLED WITH EITHER AN ELECTRIC OPERATOR OR A LOCK (MUST ENGAGE BOTH TRACKS ON DOORS WITH EXTENSION SPRINGS).

USE ONE EXTRA SELF DRILLING SCREW THROUGH TOP LEAF OF HINGE, END STILE, CAP AND RAIL. TYPICAL EACH END HINGE.

NOTE: GLAZING DOES NOT SATISFY IMPACT DEBRIS REQUIREMENTS IN FBC

FL 15080

9 X 8

REV.	E.C.N.	DATE	APPROV.
C		12/15/11	RLB
B		3/10/08	RLB
A		11/1/07	RLB
		2810	3-8-07



P.O. BOX 8915
LITTLE ROCK, AR
72219-8915
(501) 562-1872

MODELS: 724, 426, 730, 735, 750, 755

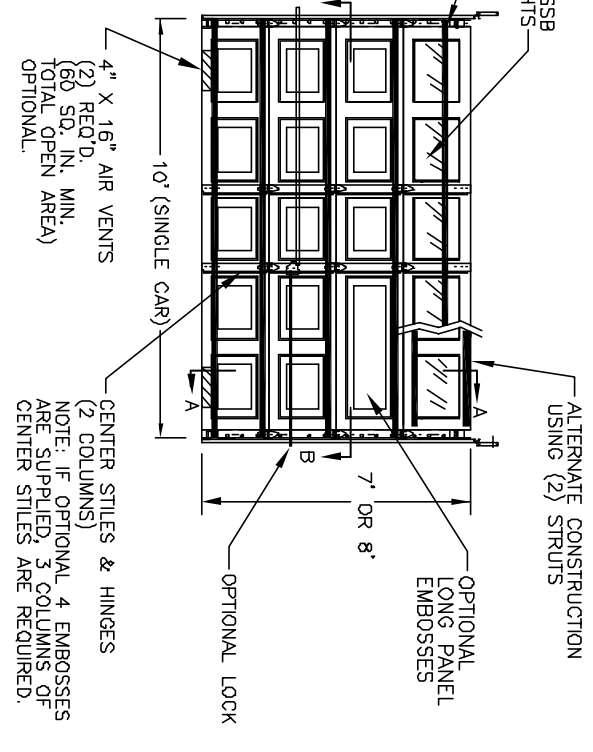
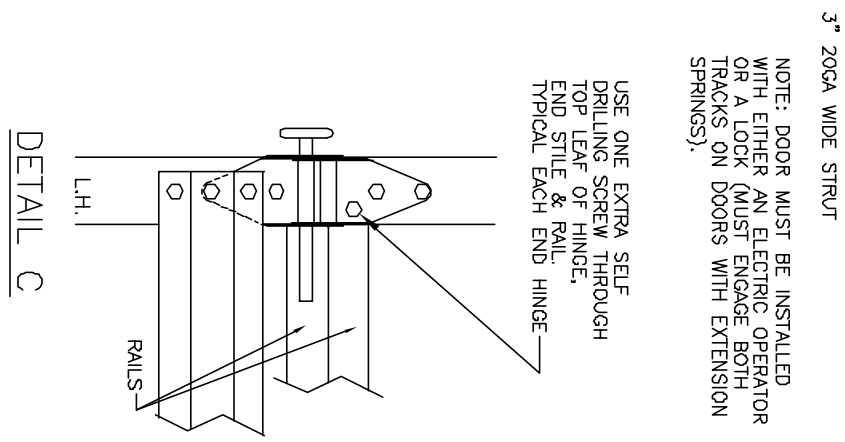
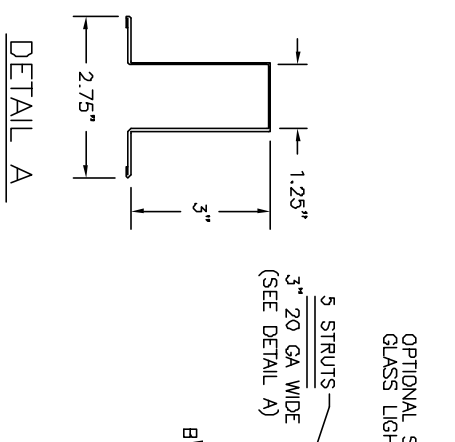
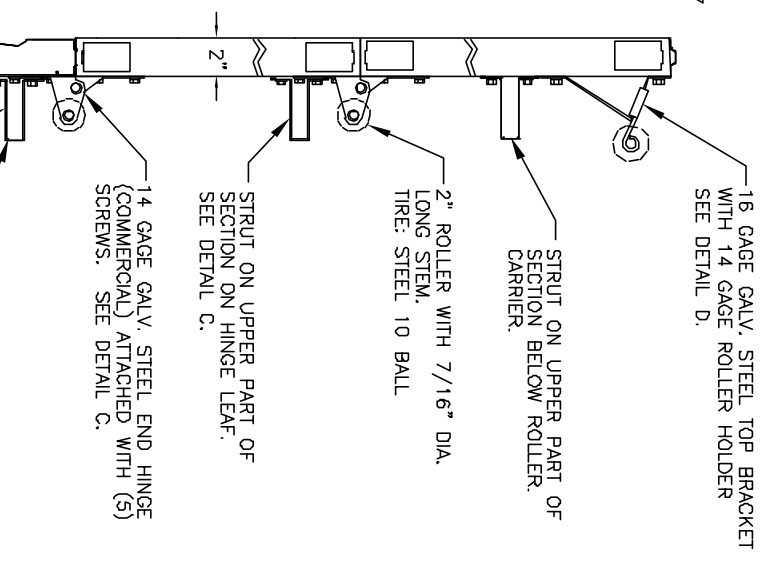
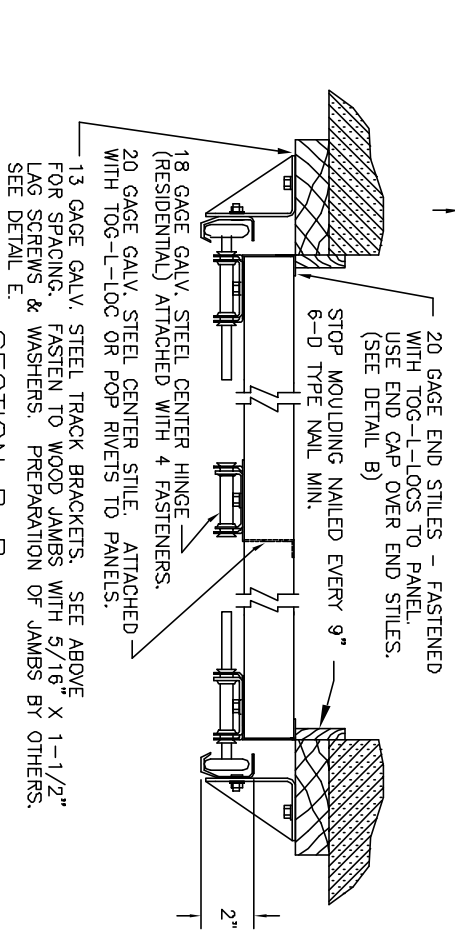
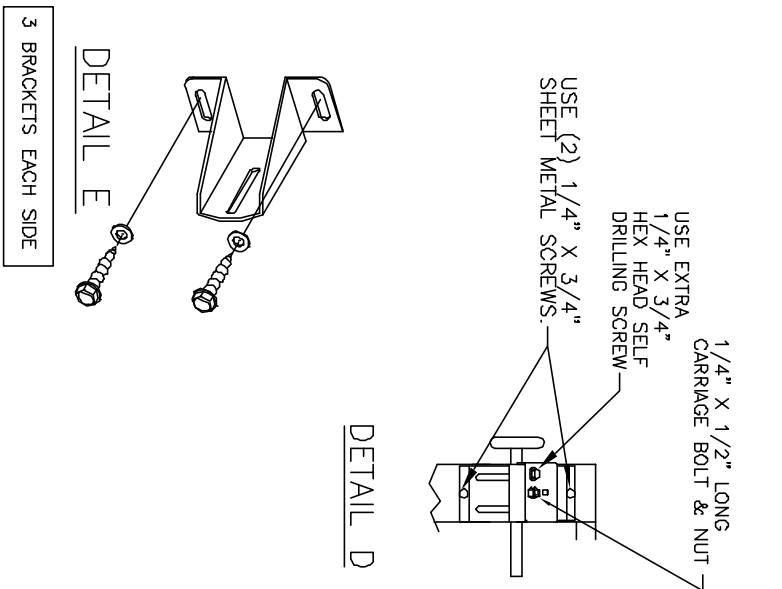
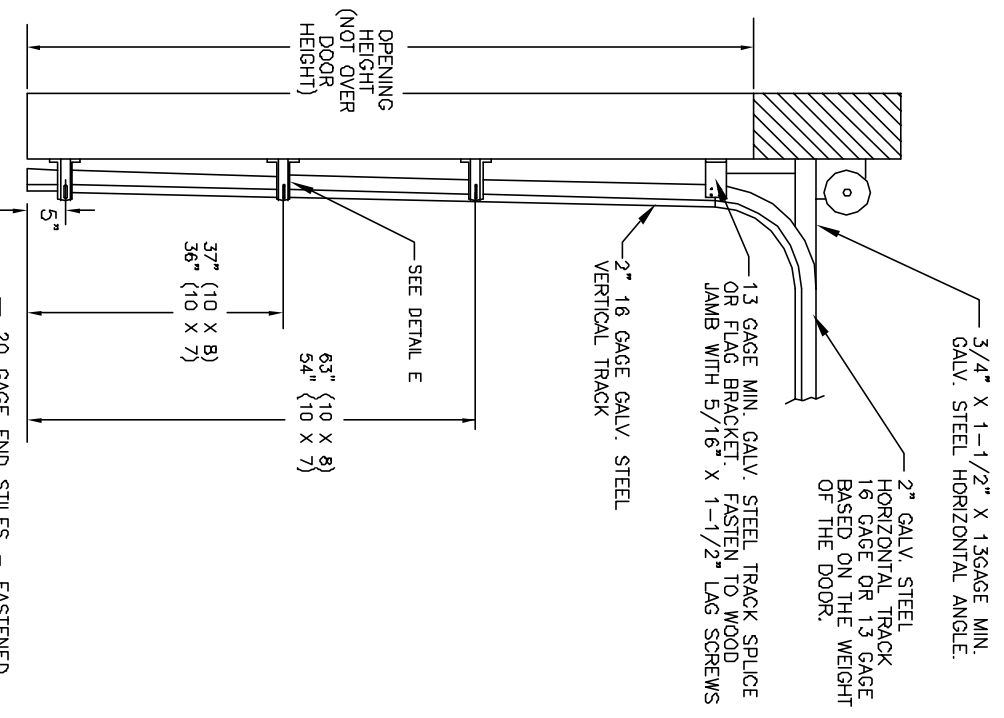
PART NAME: WINDLOAD RESIDENTIAL PAN DOOR W2 B

SCALE: NONE

DATE: 2/27/07

DWG. NO.: 99-B-080

SHEET 2 OF 6



NOTE: GLAZING DOES NOT SATISFY IMPACT DEBRIS REQUIREMENTS IN FBC

FL 15080

10 X 7

10 X 8

P.S.F. TABLE

DOOR SIZE	DESIGN PRESSURE	TEST PRESSURE			
WIDTH	POSITIVE	NEGATIVE			
10'-0"	7'-0"	+27.0	-30.5	+40.5	-45.8
10'-0"	8'-0"	+27.0	-30.5	+40.5	-45.8

NOTE: ALL NON-DESCRIPTIVE FASTENERS SHOWN TO BE 1/4" 20 X 5/8" HEX BOLTS & NUTS OR 1/4" X 3/4" LONG HEX HEAD SHEET METAL SCREWS.

DOORS SHOWN ON THIS DRAWING HAVE BEEN DEMONSTRATED TO WITHSTAND THE PRESSURES LISTED IN THE TABLE ABOVE VIA TESTING TO ANSI/DASMA 108-05.

DETERMINATION OF SUITABILITY FOR SPECIFIC SITES IS THE RESPONSIBILITY OF OTHERS.

John E. Scotas PE
3121 FAIRGATE DR.
Corralton, TX 75007
TX-PE 56308-F-2203
FL-PE 51737
972-492-9500

Professional Engineer's seal provided only for verification of windload construction details.

REV.	E.C.N.	DATE	APPROV.
C		12/15/11	RLB
B		3/10/08	RLB
A		11/1/07	RLB
		2810	3-8-07
			RLB

WINDSOR DOOR

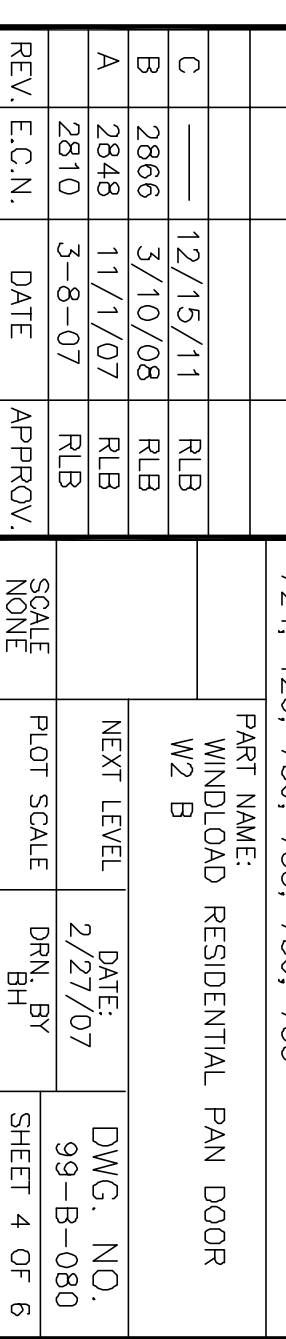
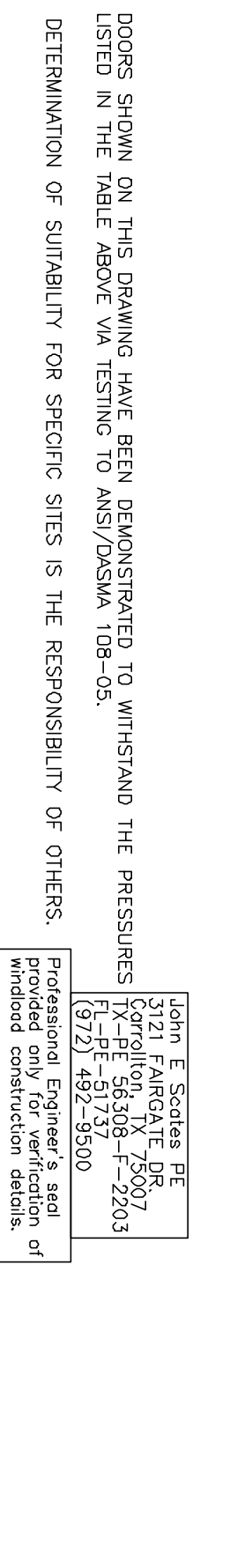
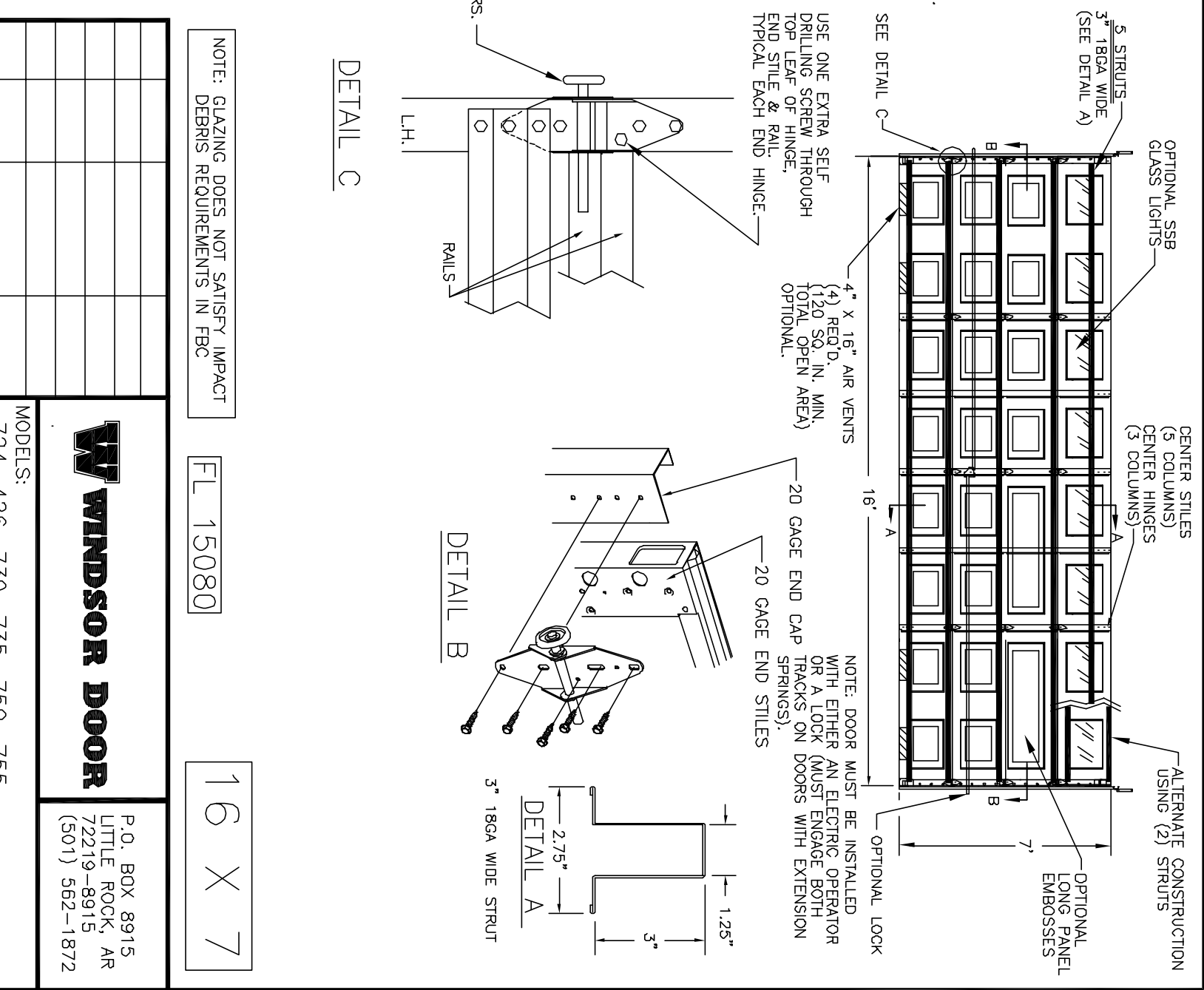
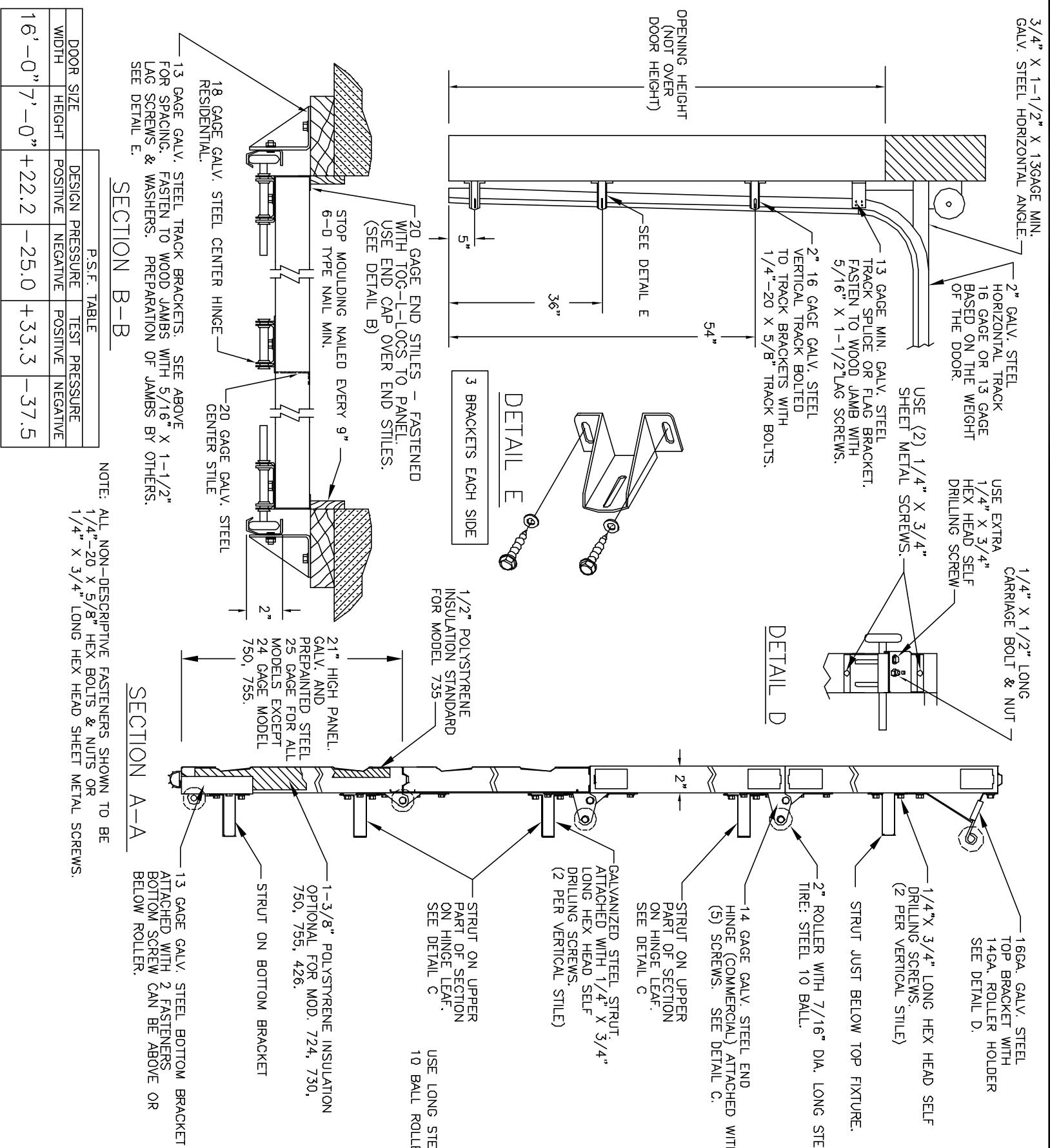
P.O. BOX 8915
LITTLE ROCK, AR
72219-8915
(501) 562-1872

MODELS:
724, 426, 730, 735, 750, 755

PART NAME:
WINDLOAD RESIDENTIAL PAN DOOR
W2 B

SCALE	PLOT SCALE	DRN. BY	SHEET
NONE		BH	3 OF 6

DATE: 2/27/07
DWG. NO. 99-B-080



3/4" X 1-1/2" X 13GAGE MIN. GALV. STEEL HORIZONTAL ANGLE.
 2" GALV. STEEL HORIZONTAL TRACK 16 GAGE OR 13 GAGE BASED ON THE WEIGHT OF THE DOOR.
 USE (2) 1/4" X 3/4" SHEET METAL SCREWS.
 USE EXTRA 1/4" X 3/4" HEX HEAD SELF DRILLING SCREW.
 1/4" X 1/2" LONG CARRIAGE BOLT & NUT
 16GA. GALV. STEEL TOP BRACKET WITH 14GA. ROLLER HOLDER SEE DETAIL D.
 1/4" X 3/4" LONG HEX HEAD SELF DRILLING SCREWS. (2 PER VERTICAL STILE)
 STRUT JUST BELOW TOP FIXTURE.
 2" ROLLER WITH 7/16" DIA. LONG STEM. TIRE: STEEL 10 BALL.
 14 GAGE GALV. STEEL END HINGE (COMMERCIAL) ATTACHED WITH (5) SCREWS. SEE DETAIL C.
 STRUT ON UPPER PART OF SECTION ON HINGE LEAF. SEE DETAIL C.
 GALVANIZED STEEL STRUT ATTACHED WITH 1/4" X 3/4" LONG HEX HEAD SELF DRILLING SCREWS. (2 PER VERTICAL STILE)
 STRUT ON UPPER PART OF SECTION ON HINGE LEAF. SEE DETAIL C.
 1-3/8" POLYSTYRENE INSULATION OPTIONAL FOR MOD. 724, 730, 750, 755, 426.
 STRUT ON BOTTOM BRACKET
 13 GAGE GALV. STEEL BOTTOM BRACKET ATTACHED WITH 2 FASTENERS BOTTOM SCREW CAN BE ABOVE OR BELOW ROLLER.
 USE LONG STEM 10 BALL ROLLERS.
 5 STRUTS (SEE DETAIL A) 3" 18GA WIDE (SEE DETAIL A)
 OPTIONAL SSB GLASS LIGHTS
 CENTER STILES (5 COLUMNS) CENTER HINGES (3 COLUMNS)
 ALTERNATE CONSTRUCTION USING (2) OPTIONAL LONG PANEL EMBOSSES
 4" X 16" AIR VENTS (4) REQ'D. 120 SQ. IN. MIN. TOTAL OPEN AREA. OPTIONAL.
 NOTE: DOOR MUST BE INSTALLED WITH EITHER AN ELECTRIC OPERATOR OR A LOCK (MUST ENGAGE BOTH TRACKS ON DOORS WITH EXTENSION SPRINGS).
 20 GAGE END CAP TRACKS ON DOORS WITH EXTENSION SPRINGS).
 20 GAGE END STILES
 3" 18GA WIDE STRUT
 16' x 7'
 16 X 7
 16 X 7
 16 X 7

John E. Scates PE
 3121 FAIRGATE DR.
 Carrollton, TX 75007
 TX-PE 56308-F-2203
 FL-PE-51737
 (972) 492-9500

Professional Engineer's seal provided only for verification of windload construction details.

NOTE: GLAZING DOES NOT SATISFY IMPACT DEBRIS REQUIREMENTS IN FBC

FL 15080

16 X 7

WINDSOR DOOR

P.O. BOX 8915
 LITTLE ROCK, AR
 72219-8915
 (501) 562-1872

MODELS: 724, 426, 730, 735, 750, 755

PART NAME: WINDLOAD RESIDENTIAL PAN DOOR

W2 B

DATE: 2/27/07

DWG. NO. 99-B-080

SCALE NONE

PLOT SCALE

DRN. BY BH

SHEET 4 OF 6

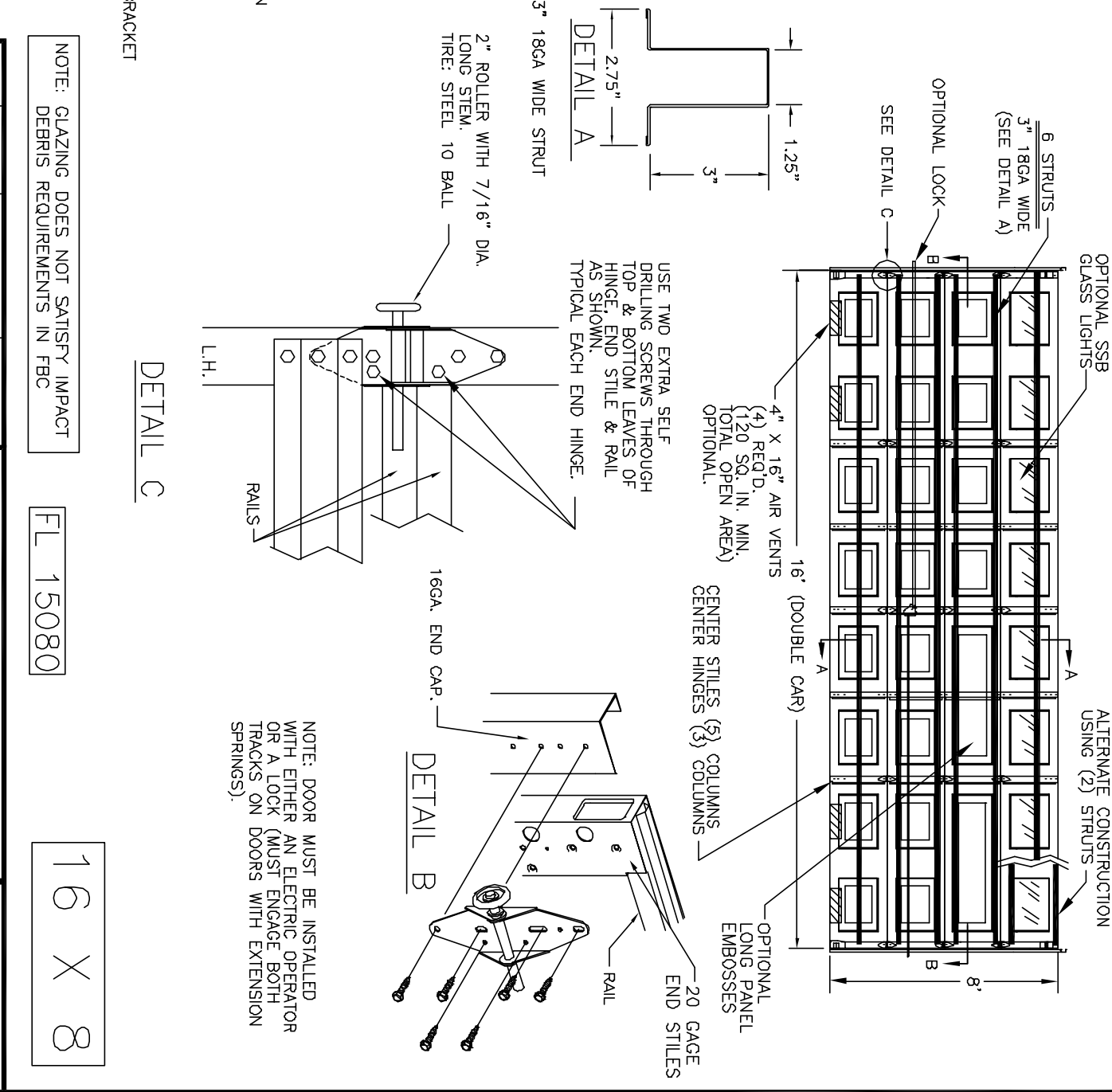
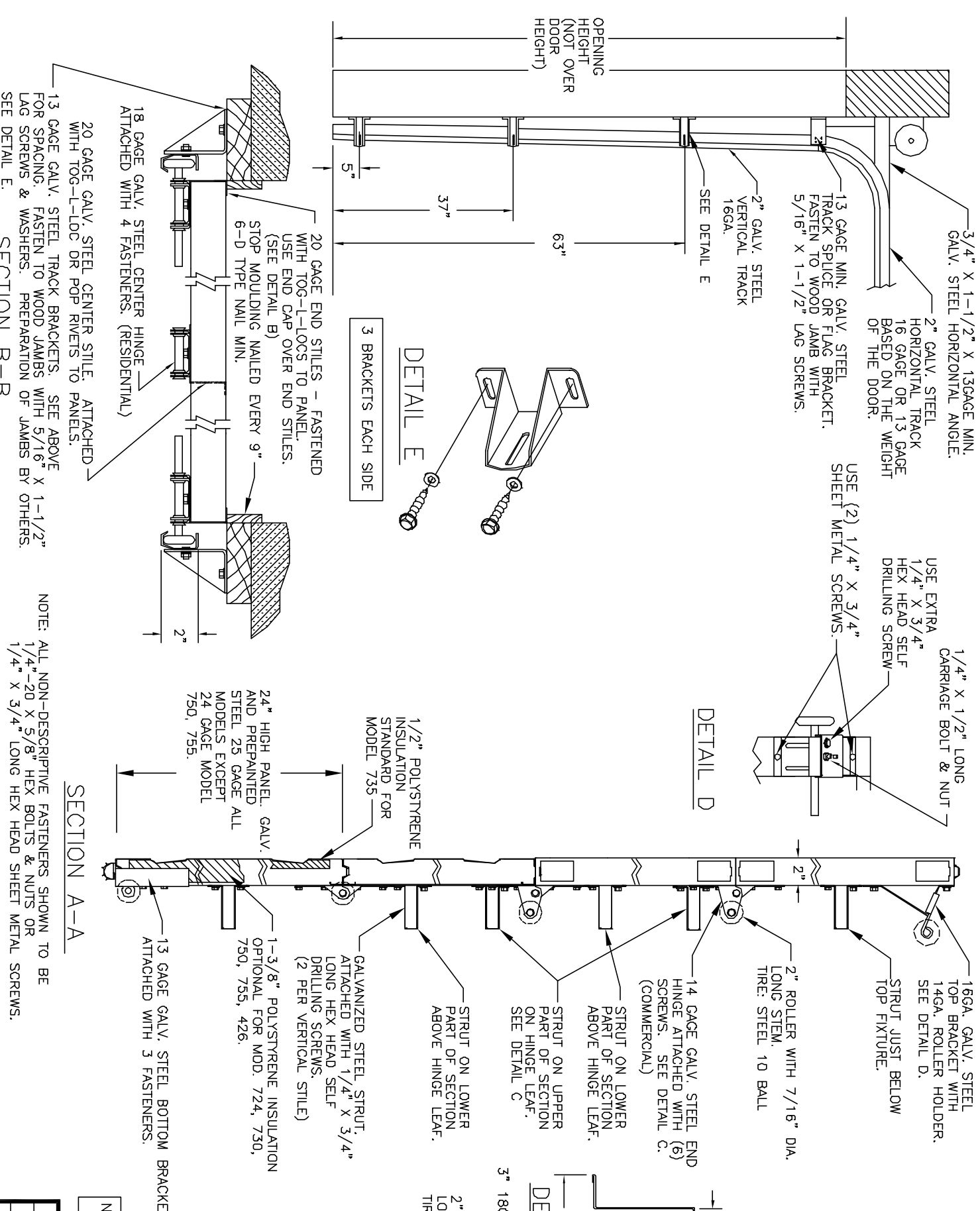
REV. E.C.N. DATE APPROV.

2810 3-8-07 RLB

2848 11/1/07 RLB

2866 3/10/08 RLB

12/15/11 RLB



DOOR SIZE	P.S.F. TABLE		TEST PRESSURE	
	DESIGN PRESSURE	POSITIVE	NEGATIVE	NEGATIVE
16'-0" WIDTH	8'-0" HEIGHT	+22.2	-25.0	+33.3
				-37.5

13 GAGE GALV. STEEL CENTER STILE. ATTACHED WITH TOG-L-LDC OR POP RIVETS TO PANELS.
 20 GAGE GALV. STEEL TRACK BRACKETS. SEE ABOVE FOR SPACING. FASTEN TO WOOD JAMBS WITH 5/16" X 1-1/2" LAG SCREWS & WASHERS. PREPARATION OF JAMBS BY OTHERS. SEE DETAIL E.
SECTION B-B

NOTE: ALL NON-DESCRIPTIVE FASTENERS SHOWN TO BE 1/4" X 20 X 5/8" HEX BOLTS & NUTS OR 1/4" X 3/4" LONG HEX HEAD SHEET METAL SCREWS.
 DOORS SHOWN ON THIS DRAWING HAVE BEEN DEMONSTRATED TO WITHSTAND THE PRESSURES LISTED IN THE TABLE ABOVE VIA TESTING TO ANSI/DASMA 108-05.
 DETERMINATION OF SUITABILITY FOR SPECIFIC SITES IS THE RESPONSIBILITY OF OTHERS.

John E. Scates PE
 3121 FAIRGATE DR.
 Carrollton, TX 75007
 TX-PE 56308-F-2203
 FL-PE-51737
 (972) 492-9500

Professional Engineer's seal provided only for verification of windload construction details.

REV.	E.C.N.	DATE	APPROV.
A	2848	11/1/07	RLB
B	2866	3/10/08	RLB
C		12/15/11	RLB

FL 15080

16 X 8

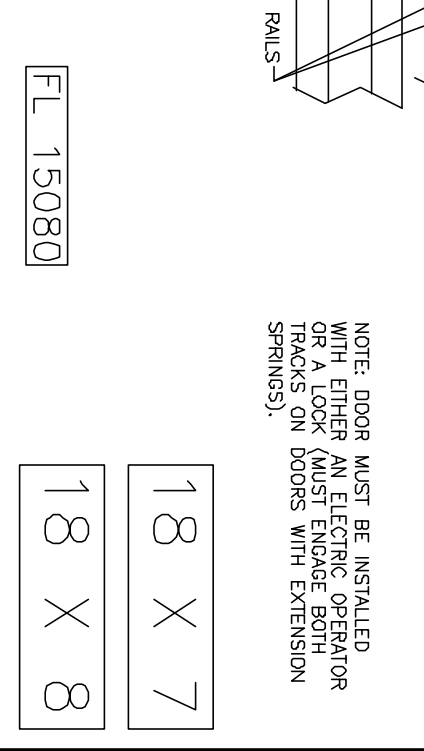
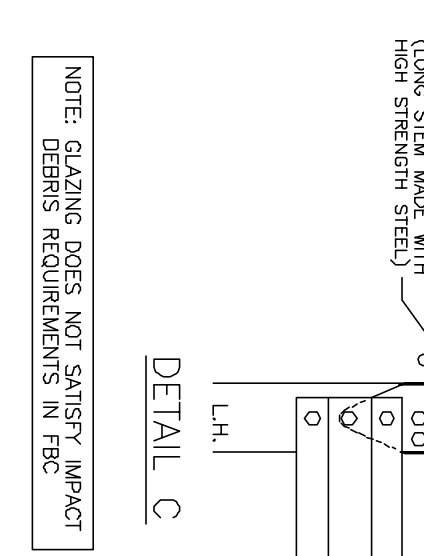
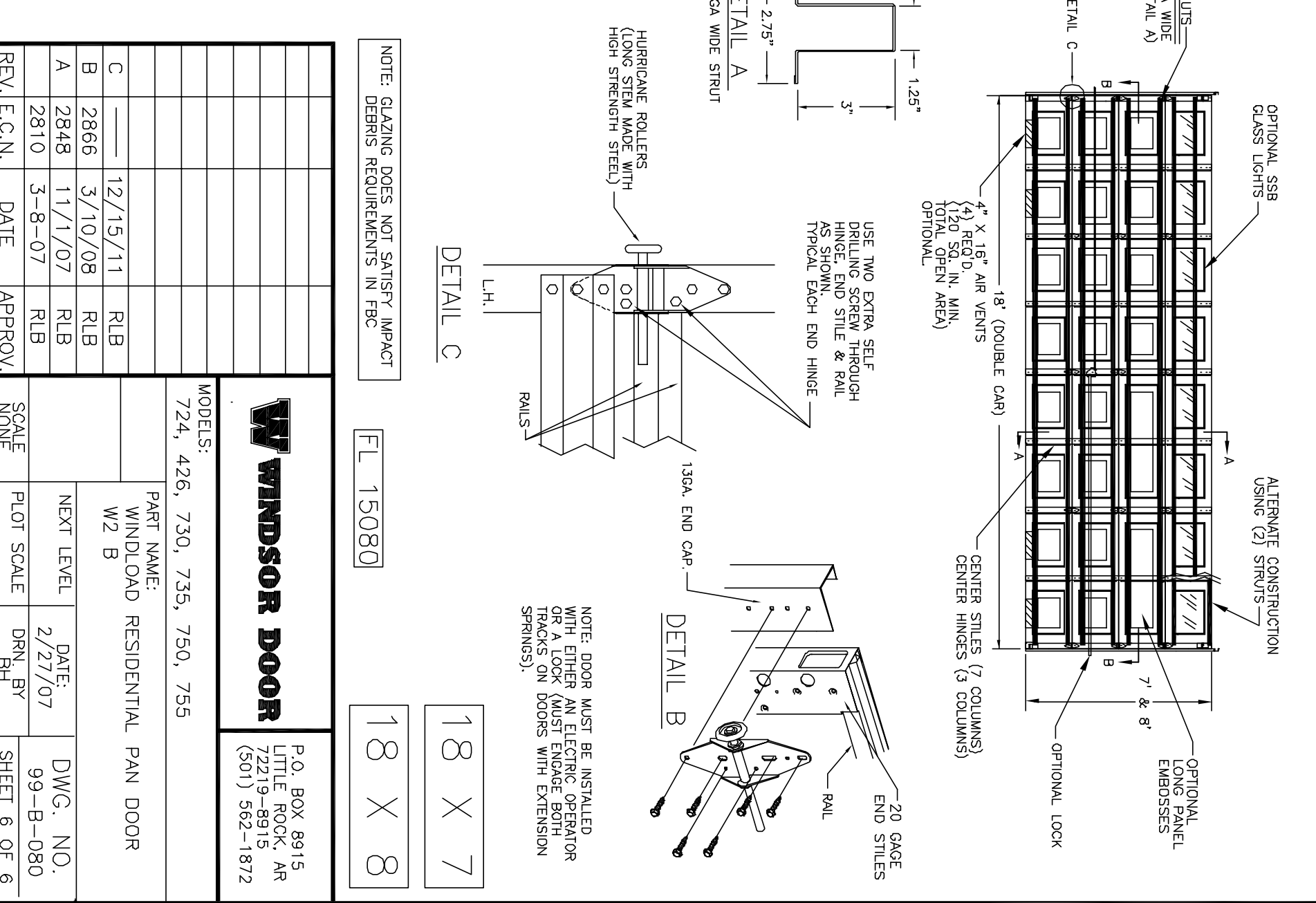
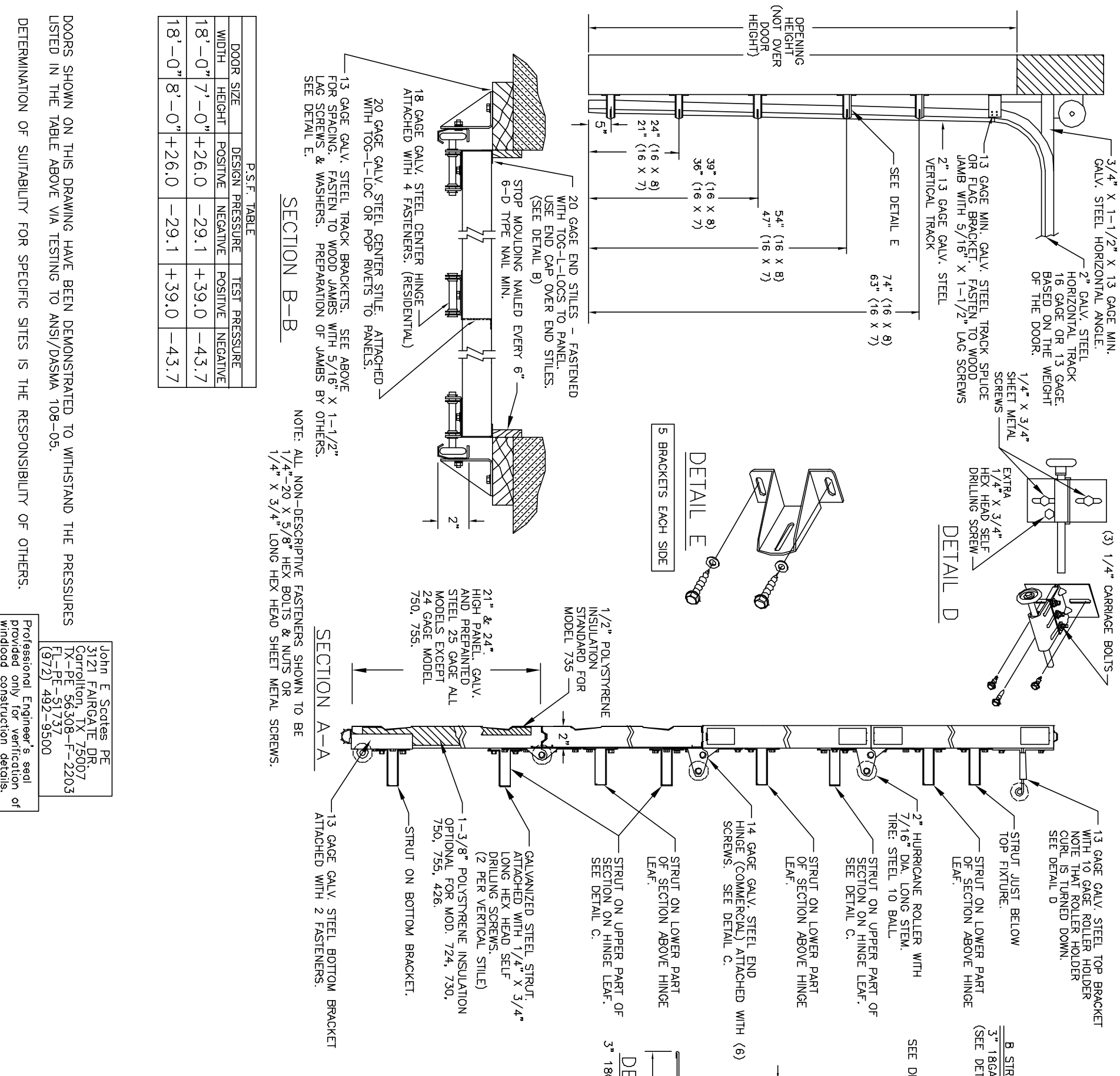
WINDSOR DOOR

P.O. BOX 8915
 LITTLE ROCK, AR
 72219-8915
 (501) 562-1872

MODELS: 724, 426, 730, 735, 750, 755

PART NAME: WINDLOAD RESIDENTIAL PAN DOOR

SCALE: NONE	DATE: 2/27/07	DWG. NO. 99-B-080
PLOT SCALE	DRN. BY BH	SHEET 5 OF 6



P.S.F. TABLE

DOOR SIZE	DESIGN PRESSURE	TEST PRESSURE			
WIDTH	HEIGHT	POSITIVE	NEGATIVE	POSITIVE	NEGATIVE
18'-0"	7'-0"	+26.0	-29.1	+39.0	-43.7
18'-0"	8'-0"	+26.0	-29.1	+39.0	-43.7

NOTE: ALL NON-DESCRIPTIVE FASTENERS SHOWN TO BE 1/4" X 20 X 5/8" HEX BOLTS & NUTS OR 1/4" X 3/4" LONG HEX HEAD SHEET METAL SCREWS.

NOTE: GLAZING DOES NOT SATISFY IMPACT DEBRIS REQUIREMENTS IN FBC

NOTE: DOOR MUST BE INSTALLED WITH EITHER AN ELECTRIC OPERATOR OR A LOCK (MUST ENGAGE BOTH TRACKS ON DOORS WITH EXTENSION SPRINGS).

FL 15080

18 X 7
18 X 8

DOORS SHOWN ON THIS DRAWING HAVE BEEN DEMONSTRATED TO WITHSTAND THE PRESSURES LISTED IN THE TABLE ABOVE VIA TESTING TO ANSI/DASMA 108-05. DETERMINATION OF SUITABILITY FOR SPECIFIC SITES IS THE RESPONSIBILITY OF OTHERS.

Professional Engineer's seal provided only for verification of windload construction details.

John E. Scotas PE
3121 FAIRGATE DR.
GARRILTON, TX 75007
TX-PE 56308-F-2203
FL-PE 51737
(972) 492-9500

REV.	E.C.N.	DATE	APPROV.
C		12/15/11	RLB
B		3/10/08	RLB
A		11/1/07	RLB
		3-8-07	RLB

WINDSOR DOOR

P.O. BOX 8915
LITTLE ROCK, AR
72219-8915
(501) 562-1872

MODELS: 724, 426, 730, 735, 750, 755

PART NAME: WINDLOAD RESIDENTIAL PAN DOOR		DATE: 2/27/07	DWG. NO. 99-B-080
SCALE NONE	PLOT SCALE	DRN. BY BH	SHEET 6 OF 6