

SECTION B-B

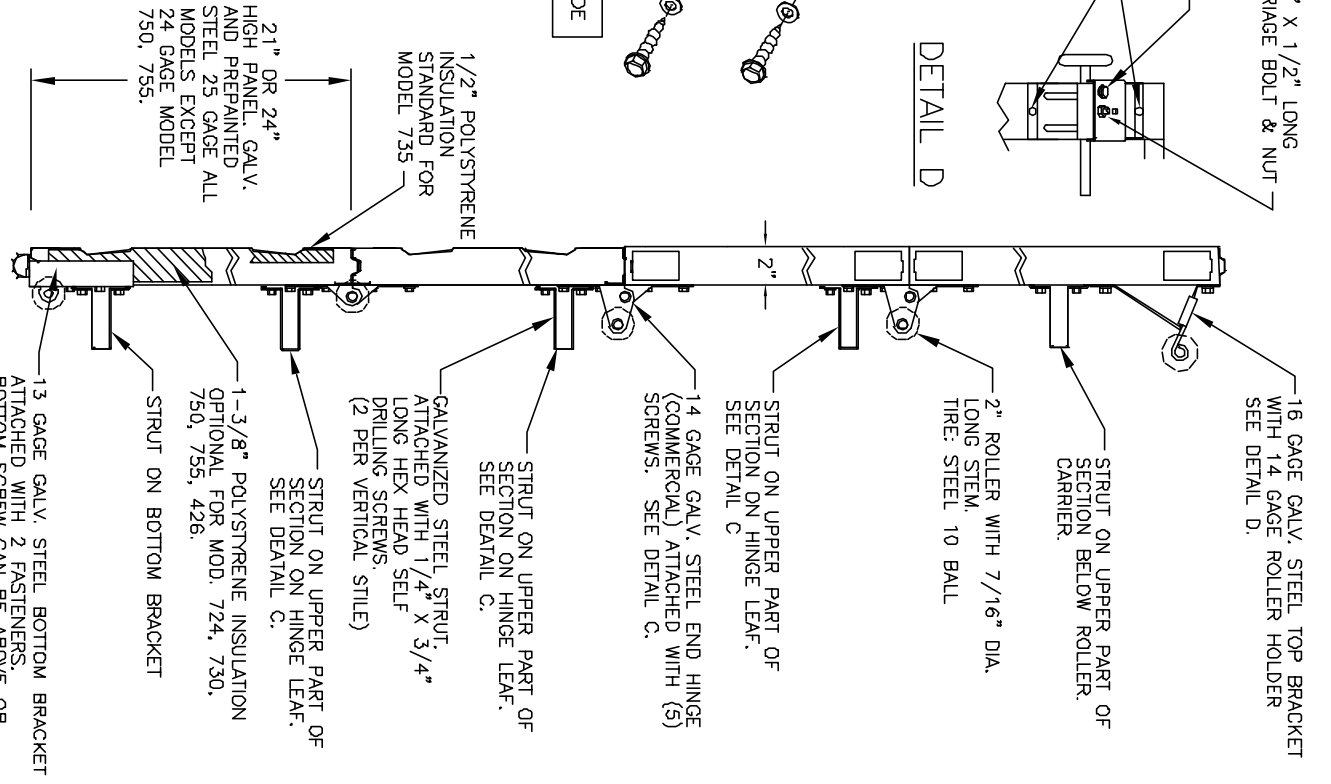
P.S.F. TABLE

DOOR SIZE	DESIGN PRESSURE	TEST PRESSURE			
WIDTH	HEIGHT	POSITIVE	NEGATIVE	POSITIVE	NEGATIVE
10'-0"	7'-0"	+27.0	-30.5	+40.5	-45.8
10'-0"	8'-0"	+27.0	-30.5	+40.5	-45.8

DOORS SHOWN ON THIS DRAWING HAVE BEEN DEMONSTRATED TO WITHSTAND THE PRESSURES LISTED IN THE TABLE ABOVE VIA TESTING TO ANS/DASMA 108-05.

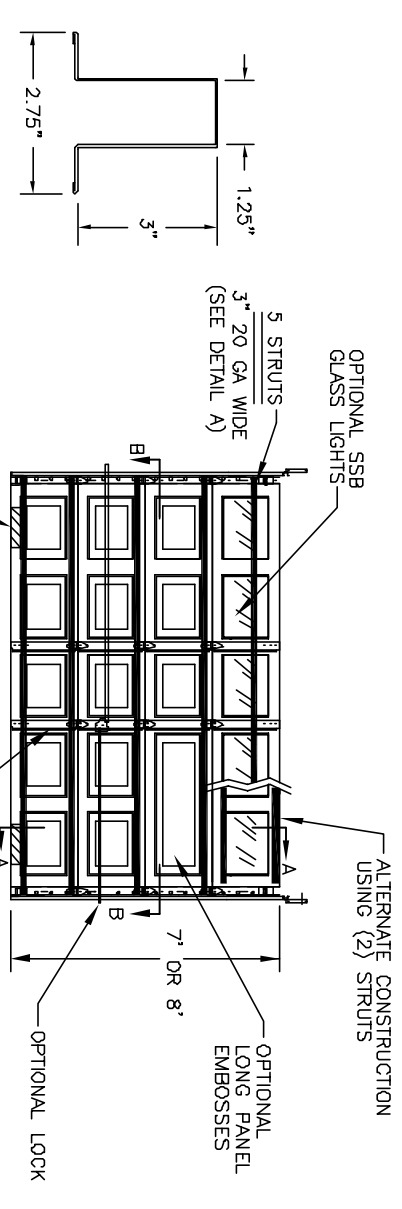
DETERMINATION OF SUITABILITY FOR SPECIFIC SITES IS THE RESPONSIBILITY OF OTHERS.

SECTION A-A



John E. Scates PE
3121 FAIRGATE DR.
Carrollton, TX 75007
TX-PE 56308-F-2203
FL-PE-51737
(972) 492-9500

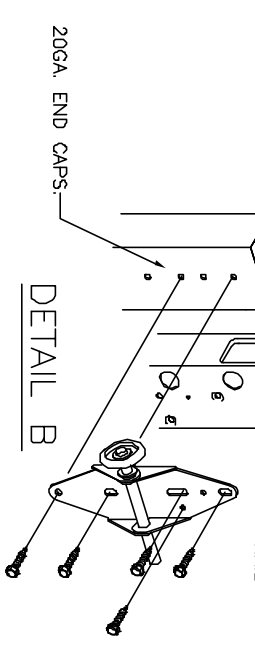
Professional Engineer's seal provided only for verification of windload construction details.



DETAIL A

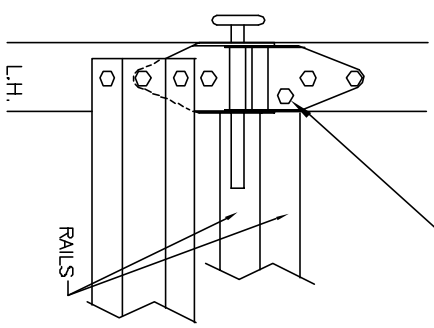
USE ONE EXTRA SELF DRILLING SCREW THROUGH TOP LEAF OF HINGE, END STILE & RAIL TYPICAL EACH END HINGE

NOTE: DOOR MUST BE INSTALLED WITH EITHER AN ELECTRIC OPERATOR OR A LOCK (MUST ENGAGE BOTH TRACKS ON DOORS WITH EXTENSION SPRINGS).



DETAIL B

DETAIL C



NOTE: ALL NON-DESCRIPTIVE FASTENERS SHOWN TO BE 1/4"-20 X 5/8" HEX BOLTS & NUTS OR 1/4" X 3/4" LONG HEX HEAD SHEET METAL SCREWS.

NOTE: GLAZING DOES NOT SATISFY IMPACT DEBRIS REQUIREMENTS IN FBC

FL 15080

10 X 7
10 X 8

REV.	E.C.N.	DATE	APPROV.
A	2848	11-1-07	RLB
B	2866	3-10-08	RLB
C		12/15/11	RLB

W WINDSOR DOOR

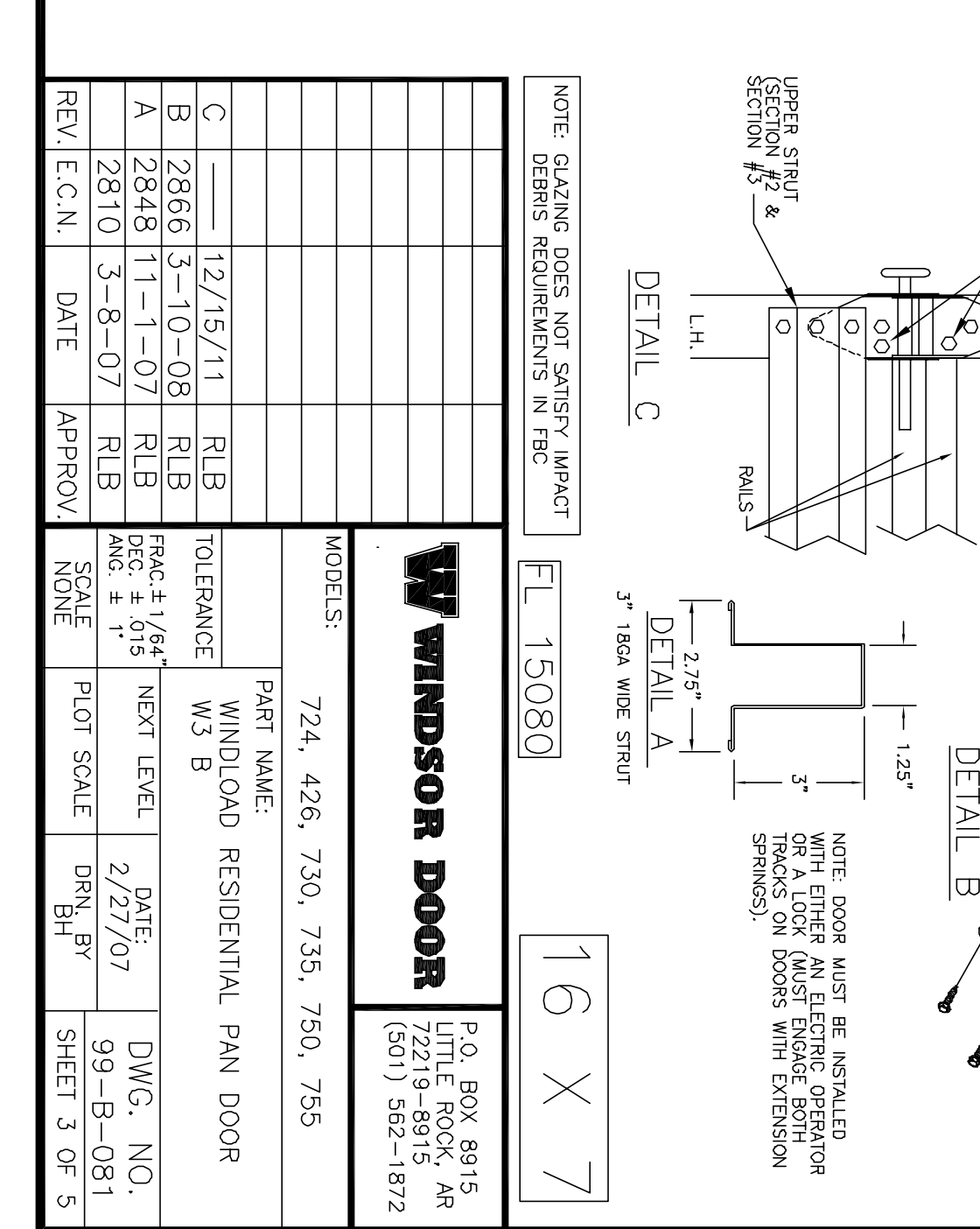
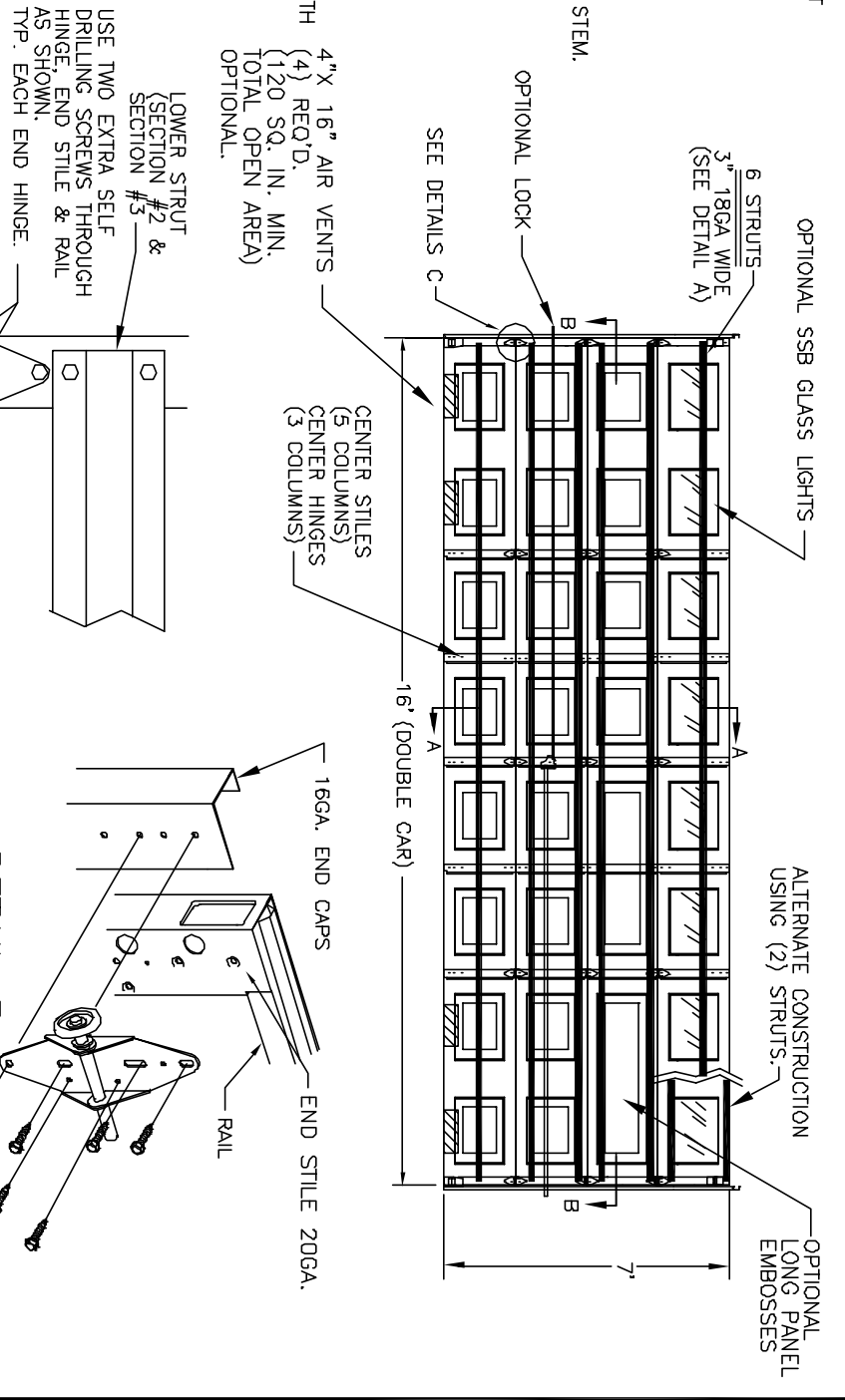
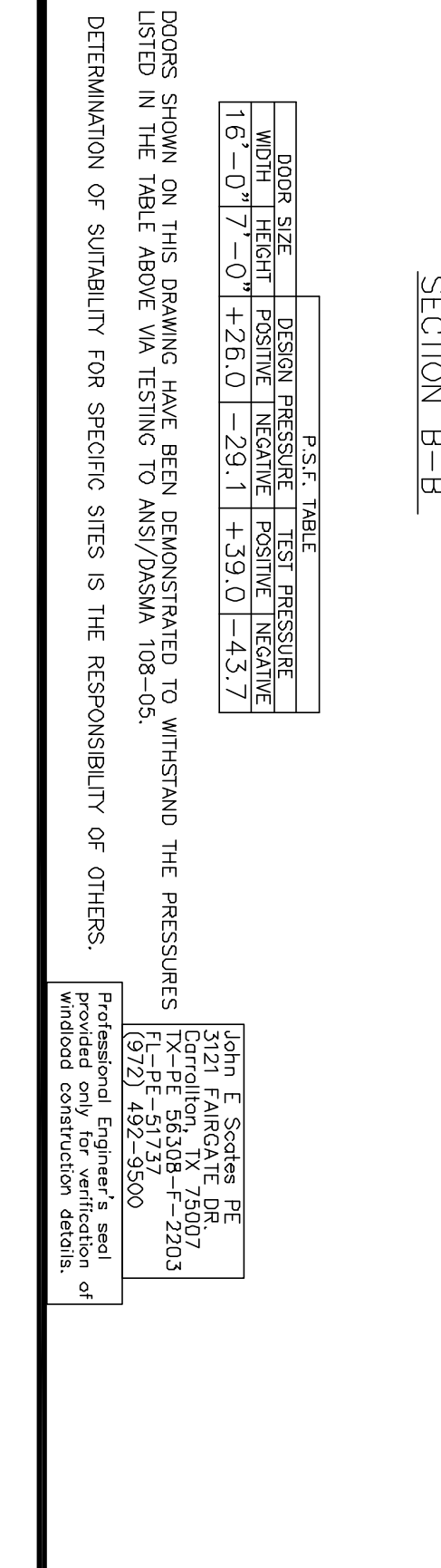
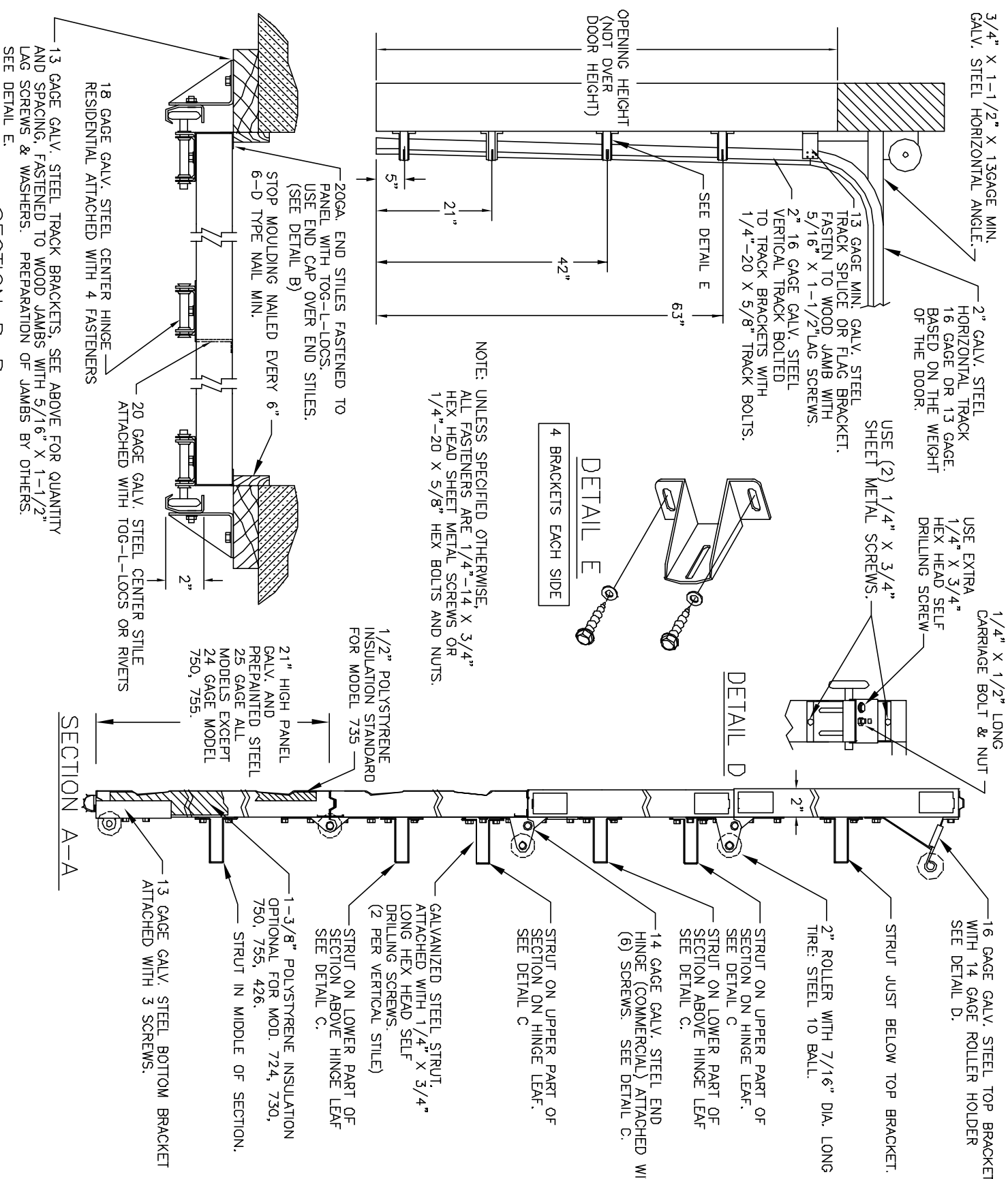
P.O. BOX 8915
LITTLE ROCK, AR
72219-8915
(501) 562-1872

MODELS:
724, 426, 730, 735, 750, 755

PART NAME:
WINDLOAD RESIDENTIAL PAN DOOR
W3 B

SCALE	PLOT SCALE	DRN. BY	SHEET
NONE		BH	2 OF 5

DATE: 2/27/07
DWG. NO. 99-B-081



3/4" X 1-1/2" X 13GAGE MIN. GALV. STEEL HORIZONTAL ANGLE.

2" GALV. STEEL HORIZONTAL TRACK 16 GAGE OR 13 GAGE. BASED ON THE WEIGHT OF THE DOOR.

USE EXTRA 1/4" X 3/4" HEX HEAD SELF DRILLING SCREW.

USE (2) 1/4" X 3/4" SHEET METAL SCREWS.

1/4" X 1/2" LONG CARRIAGE BOLT & NUT

16 GAGE GALV. STEEL TOP BRACKET WITH 14 GAGE ROLLER HOLDER SEE DETAIL D.

STRUT JUST BELOW TOP BRACKET.

2" ROLLER WITH 7/16" DIA. LONG STEM. TIRE: STEEL 10 BALL.

STRUT ON UPPER PART OF SECTION ON HINGE LEAF. SEE DETAIL C

STRUT ON LOWER PART OF SECTION ABOVE HINGE LEAF SEE DETAIL C.

14 GAGE GALV. STEEL END HINGE (COMMERCIAL) ATTACHED WITH (6) SCREWS. SEE DETAIL C.

1/2" POLYSTYRENE INSULATION STANDARD FOR MODEL 735

21" HIGH PANEL GALV. AND PREPAINTED STEEL 25 GAGE ALL MODELS EXCEPT 24 GAGE MODEL 750, 755.

1-3/8" POLYSTYRENE INSULATION OPTIONAL FOR MOD. 724, 730, 750, 755, 426.

STRUT ON LOWER PART OF SECTION ABOVE HINGE LEAF SEE DETAIL C.

STRUT IN MIDDLE OF SECTION.

13 GAGE GALV. STEEL BOTTOM BRACKET ATTACHED WITH 3 SCREWS.

20GA. END STILES FASTENED TO PANEL WITH TOG-L-LOCKS. USE END CAP OVER END STILES. (SEE DETAIL B)

STOP MOULDING NAILED EVERY 6" 6-D TYPE NAIL MIN.

20 GAGE GALV. STEEL CENTER HINGE RESIDENTIAL ATTACHED WITH 4 FASTENERS

13 GAGE GALV. STEEL TRACK BRACKETS. SEE ABOVE FOR QUANTITY AND SPACING, FASTENED TO WOOD JAMBS WITH 5/16" X 1-1/2" LAG SCREWS & WASHERS. PREPARATION OF JAMBS BY OTHERS. SEE DETAIL E.

P.S.F. TABLE

DOOR SIZE	DESIGN PRESSURE	TEST PRESSURE			
WIDTH	HEIGHT	POSITIVE	NEGATIVE	POSITIVE	NEGATIVE
16'-0"	7'-0"	+26.0	-29.1	+39.0	-43.7

DOORS SHOWN ON THIS DRAWING HAVE BEEN DEMONSTRATED TO WITHSTAND THE PRESSURES LISTED IN THE TABLE ABOVE VIA TESTING TO ANSI/DASMA 108-05.

DETERMINATION OF SUITABILITY FOR SPECIFIC SITES IS THE RESPONSIBILITY OF OTHERS.

John E. Scotese PE
 3121 FAIRGATE DR.
 Carrollton, TX 75007
 TX-PE 56308-F-2203
 FL-PE-51737
 (972) 492-9500

Professional Engineer's seal provided only for verification of windload construction details.

NOTE: GLAZING DOES NOT SATISFY IMPACT DEBRIS REQUIREMENTS IN FBC

FL 15080

16 X 7

W WINDSOR DOOR

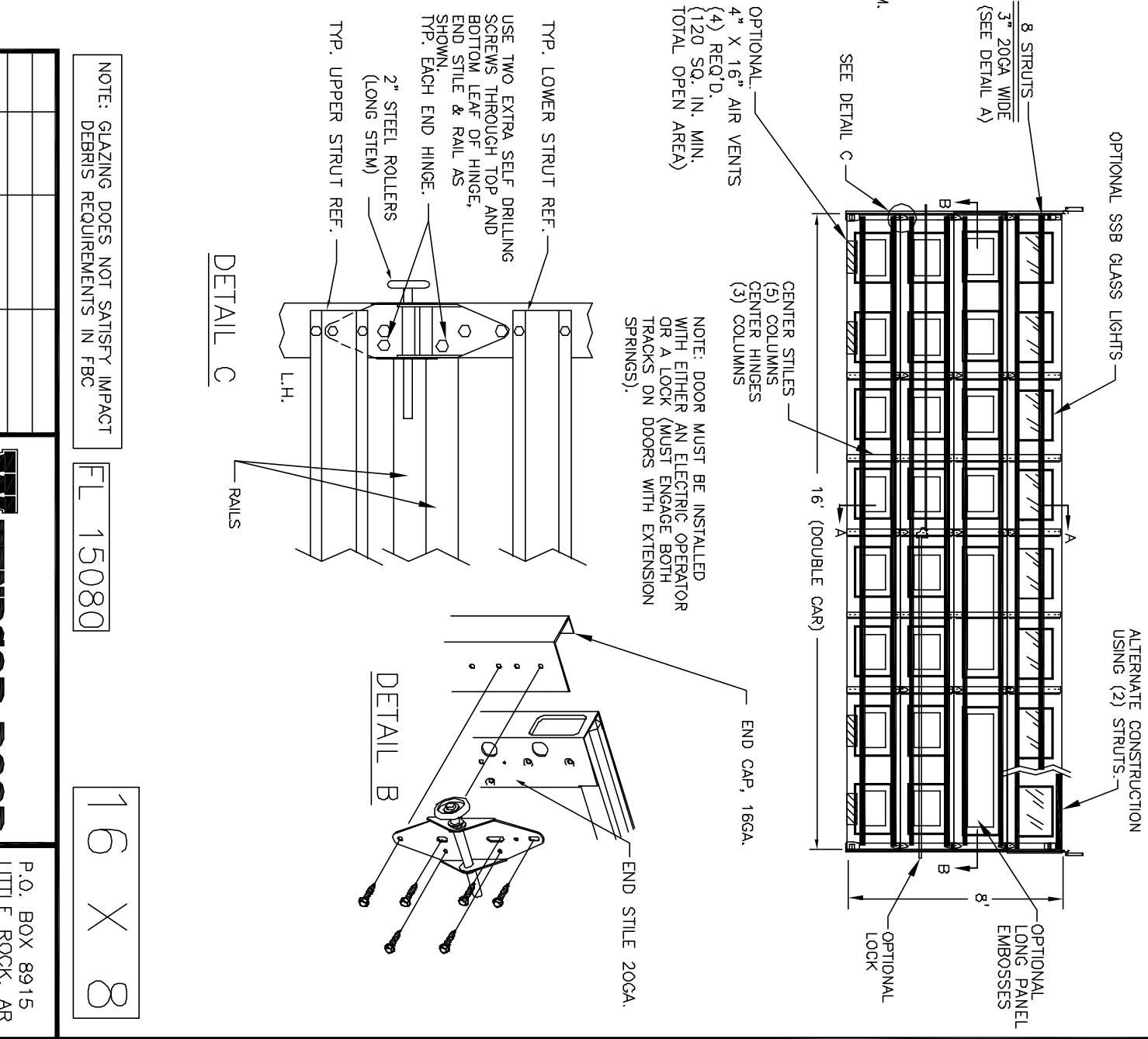
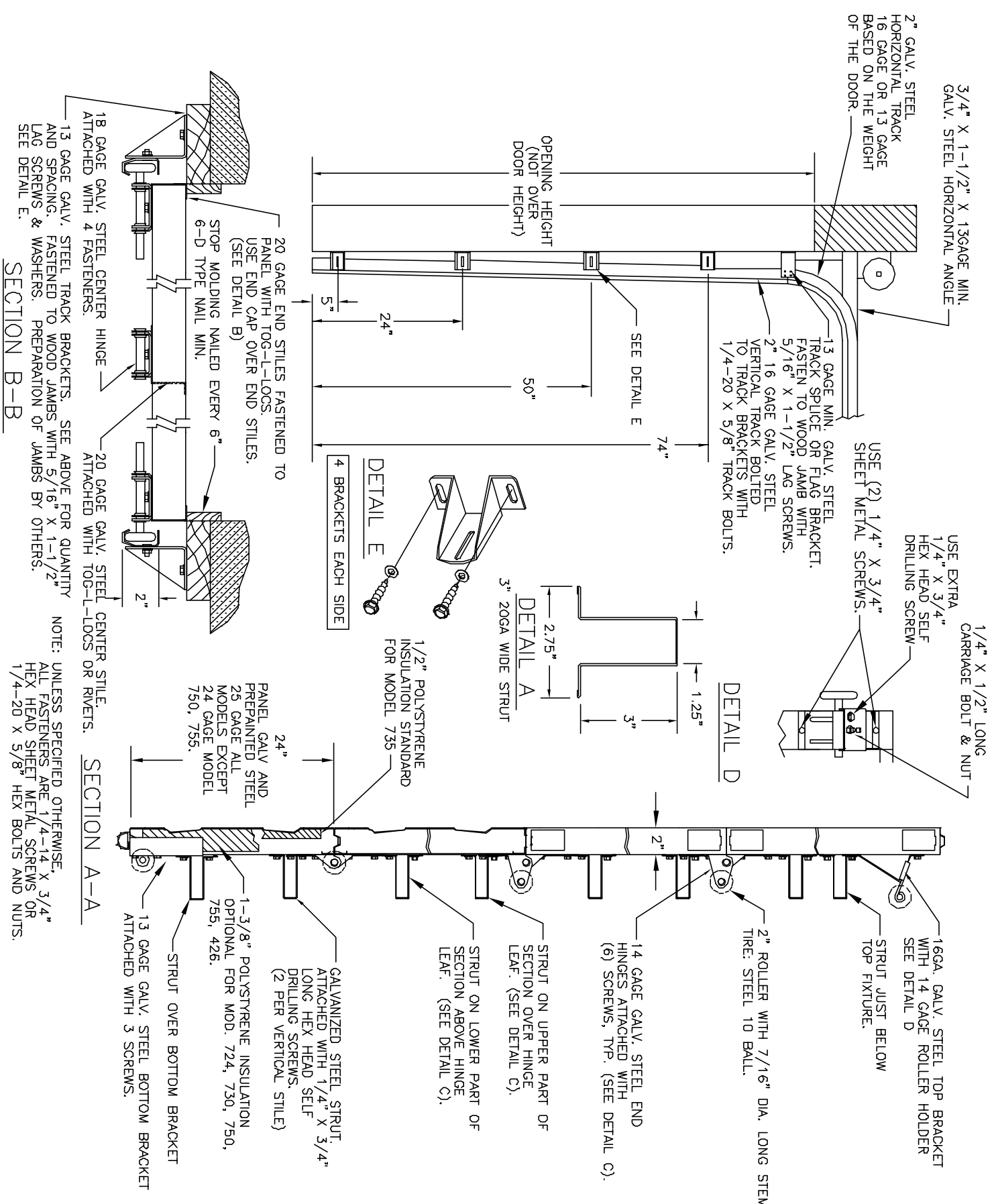
P.O. BOX 8915
 LITTLE ROCK, AR
 72219-8915
 (501) 562-1872

MODELS: 724, 426, 730, 735, 750, 755

PART NAME: WINDLOAD RESIDENTIAL PAN DOOR

REV.	E.C.N.	DATE	APPROV.	SCALE	PLOT SCALE	DRN. BY	DWG. NO.
C		12/15/11	RLB				
B		2866 3-10-08	RLB				
A		2848 11-1-07	RLB				
		2810 3-8-07	RLB				

SCALE NONE
 NEXT LEVEL DATE: 2/27/07
 DWG. NO. 99-B-081
 SHEET 3 OF 5



P.S.F. TABLE

DOOR SIZE	DESIGN PRESSURE	TEST PRESSURE			
WIDTH	POSITIVE	NEGATIVE			
16'-0"	8'-0"	+26.0	-29.0	+39.0	-43.5

NOTE: UNLESS SPECIFIED OTHERWISE, ALL FASTENERS ARE 1/4" X 3/4" HEX HEAD SHEET METAL SCREWS OR 1/4-20 X 5/8" HEX BOLTS AND NUTS.

DOORS SHOWN ON THIS DRAWING HAVE BEEN DEMONSTRATED TO WITHSTAND THE PRESSURES LISTED IN THE TABLE ABOVE VIA TESTING TO ANSI/DASMA 108-05. DETERMINATION OF SUITABILITY FOR SPECIFIC SITES IS THE RESPONSIBILITY OF OTHERS.

Professional Engineer's seal provided only for verification of windload construction details.

John E. Scoates PE
3121 FAIRGATE DR.
CARROLLTON, TX 75007
TX-PE 56308-F-2203
FL-PE-51737
(972) 492-9500

REV.	E.C.N.	DATE	APPROV.
A	2848	11-1-07	RLB
B	2866	3-10-08	RLB
C		12/15/11	RLB

NOTE: GLAZING DOES NOT SATISFY IMPACT DEBRIS REQUIREMENTS IN FBC

FL 15080

16 X 8

W WINDSOR DOOR

P.O. BOX 8915
LITTLE ROCK, AR
72219-8915
(501) 562-1872

MODELS: 724, 426, 730, 735, 750, 755

PART NAME: WINDLOAD RESIDENTIAL PAN DOORS

SCALE: NONE

DATE: 2/27/07

DWG. NO. 99-B-081

SHEET 4 OF 5

FRAC. ± 1/64"
DEC. ± .015
ANG. ± 1'

TOLERANCE

W3 B

DATE: 2/27/07

DRN. BY BH

