

P.S.F. TABLE

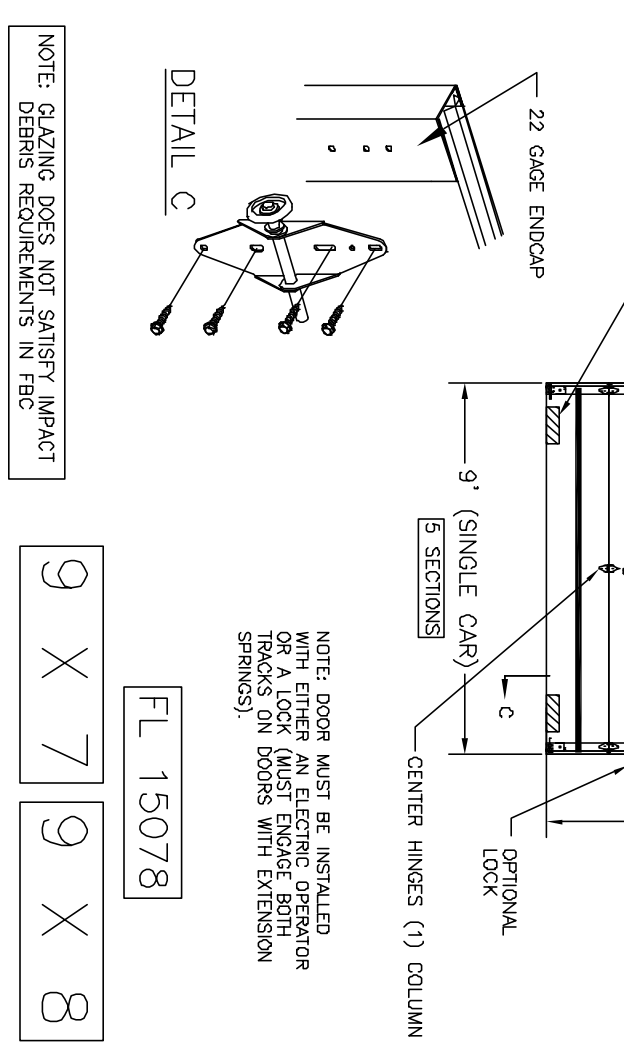
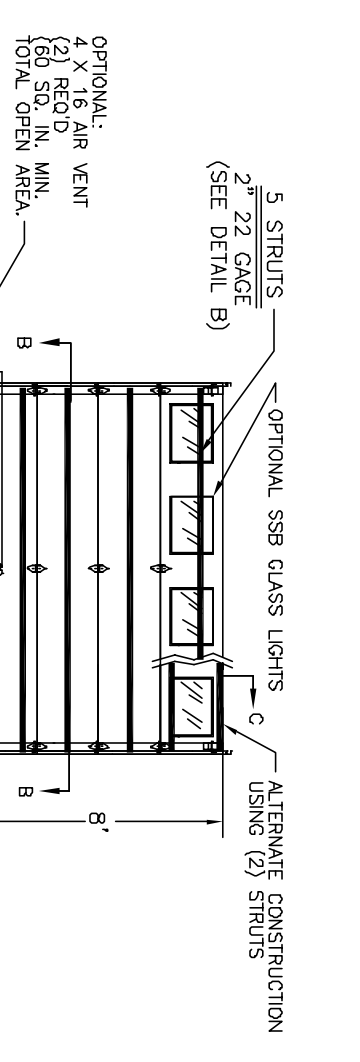
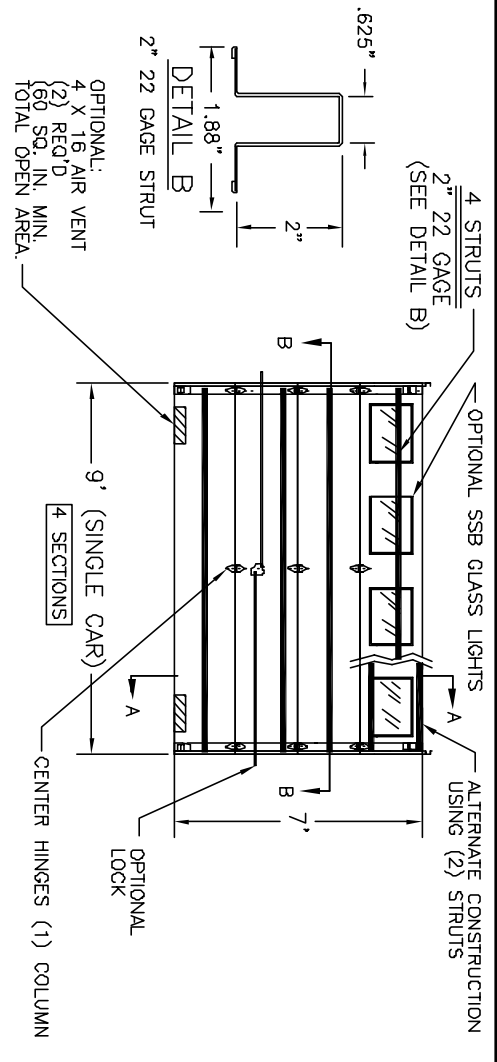
DOOR SIZE	DESIGN PRESSURE	TEST PRESSURE
WIDTH	POSITIVE	NEGATIVE
9'-0" 7'-0"	+19.8	-22.2
9'-0" 8'-0"	+19.8	-22.2
	+29.7	-33.3
	+29.7	-33.3

NOTE: ALL NON-DESCRIPTIVE FASTENERS SHOWN TO BE 1/4" X 20 X 5/8" HEX BOLTS & NUTS OR 1/4" X 3/4" LONG HEX HEAD SHEET METAL SCREWS.

DOORS SHOWN ON THIS DRAWING HAVE BEEN DEMONSTRATED TO WITHSTAND THE PRESSURES LISTED IN THE TABLE ABOVE VIA TESTING TO ANSI/DASMA 108-05. DETERMINATION OF SUITABILITY FOR SPECIFIC SITES IS THE RESPONSIBILITY OF OTHERS.

John E. Scotese PE
3121 FAIRGATE DR.
CARRINGTON, TX 75007
TX-PE 56308-F-2203
FL-PE-51737
(972) 492-9500

Professional Engineer's seal provided only for verification of window construction details.



NOTE: GLAZING DOES NOT SATISFY IMPACT DEBRIS REQUIREMENTS IN FBC

9 X 7 9 X 8

FL 15078

REV.	E.C.N.	DATE:	APPROV.
A	2866	3/10/08	RLB
B	2851	11/1/07	RLB

WINDSOR DOOR

MODELS: 790

DWG. WAS W1 B

PART NAME: WINDOWLOAD RESIDENTIAL SANDWICH DOOR

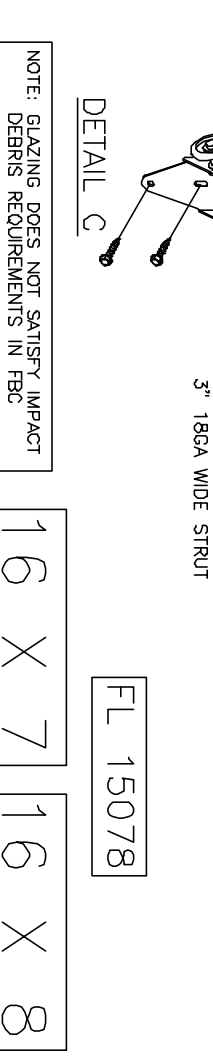
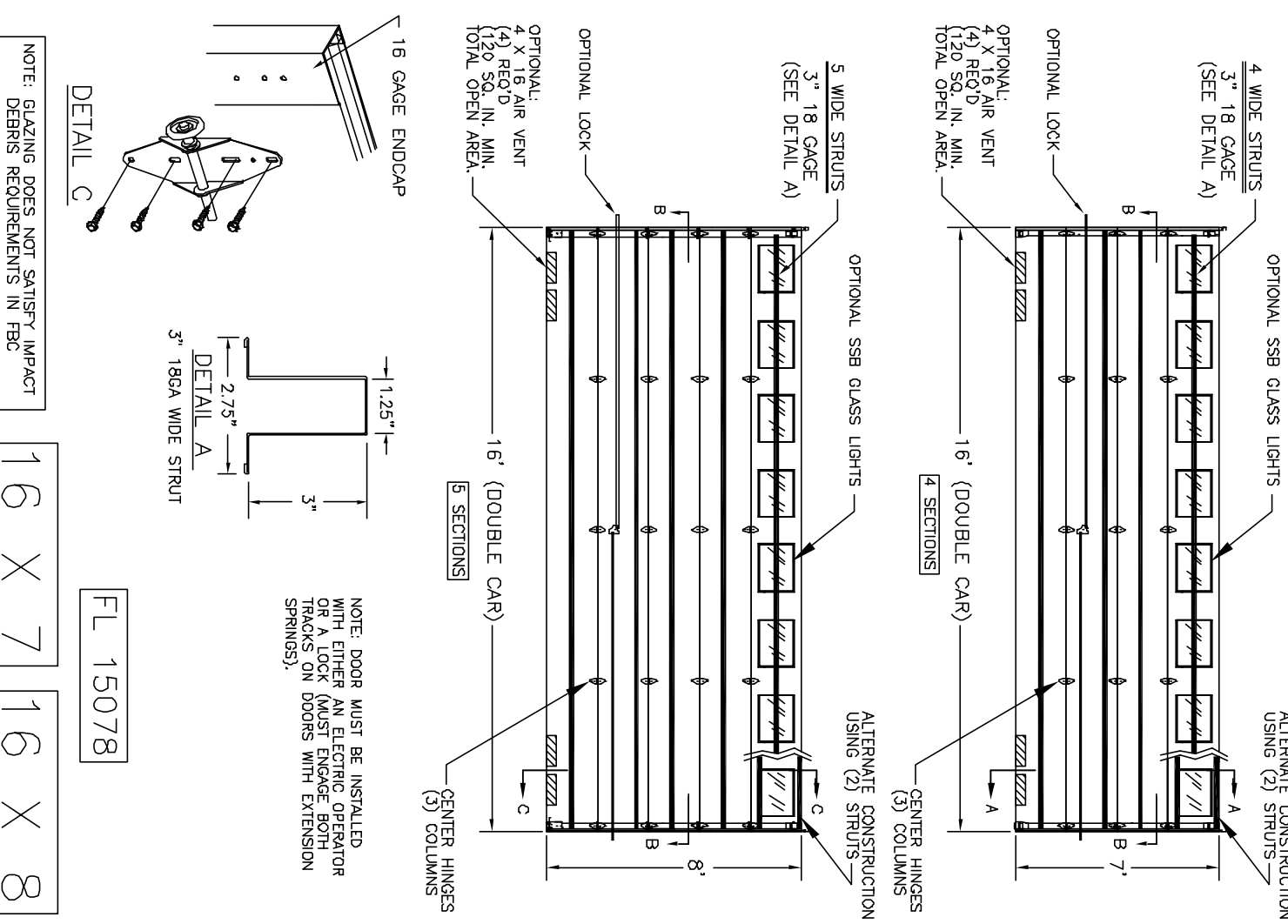
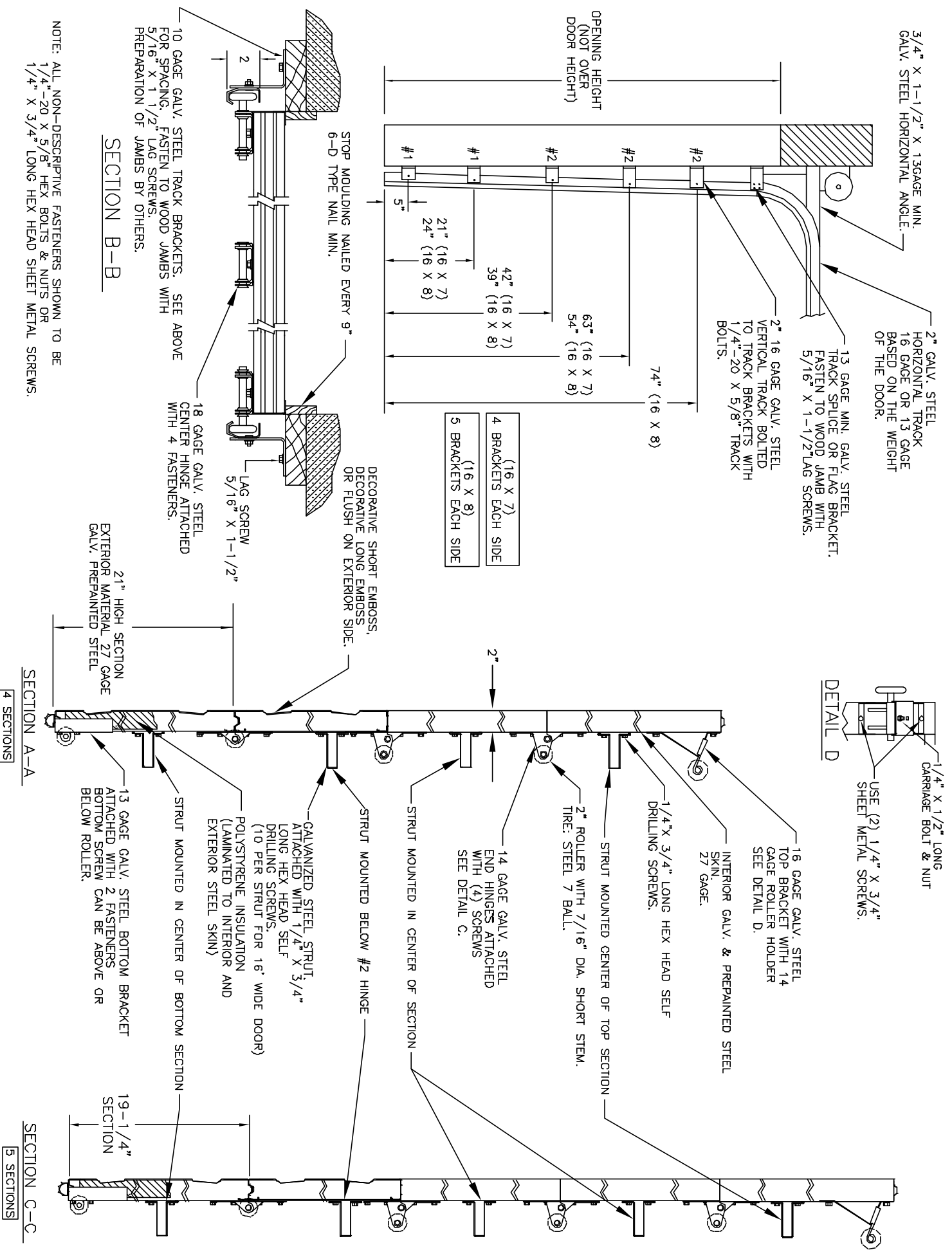
TOLERANCE: FRAC ± 1/64" DEC. ± .015 ANG. ± 1'

DATE: 11/1/07

DRN. BY: BH

DWG. NO. 99-B-085

P.O. BOX 8915
LITTLE ROCK, AR
72219-8915
(501) 562-1872



P.S.F. TABLE

DOOR SIZE	DESIGN PRESSURE	TEST PRESSURE			
WIDTH	HEIGHT	POSITIVE	NEGATIVE	POSITIVE	NEGATIVE
16'-0"	7'-0"	+18.7	-20.8	+28.1	-31.2
16'-0"	8'-0"	+18.7	-20.8	+28.1	-31.2

NOTE: ALL NON-DESCRIPTIVE FASTENERS SHOWN TO BE 1/4"-20 X 5/8" HEX BOLTS & NUTS OR 1/4" X 3/4" LONG HEX HEAD SHEET METAL SCREWS.

John F. Scotter PE
3121 FAIRGATE DR
Controllo, TX 75007
TX-PE 96308-F-2203
FL-PE-91737
(972) 492-9300

NOTE: GLAZING DOES NOT SATISFY IMPACT DEBRIS REQUIREMENTS IN FBC

16 X 7 16 X 8
FL 15078

DOORS SHOWN ON THIS DRAWING HAVE BEEN DEMONSTRATED TO WITHSTAND THE PRESSURES LISTED IN THE TABLE ABOVE VIA TESTING TO ANSI/DASMA 108-05.
DETERMINATION OF SUITABILITY FOR SPECIFIC SITES IS THE RESPONSIBILITY OF OTHERS.

Professional Engineer's seal provided only for verification of window construction details.

REV.	E.C.N.	DATE:	APPROV.
A	2866	3/10/08	RLB
B	2851	11/1/07	RLB

MODELS: 790

DWG. WAS PART NAME: WINDLOAD RESIDENTIAL SANDWICH DOOR

TOLERANCE W1 B

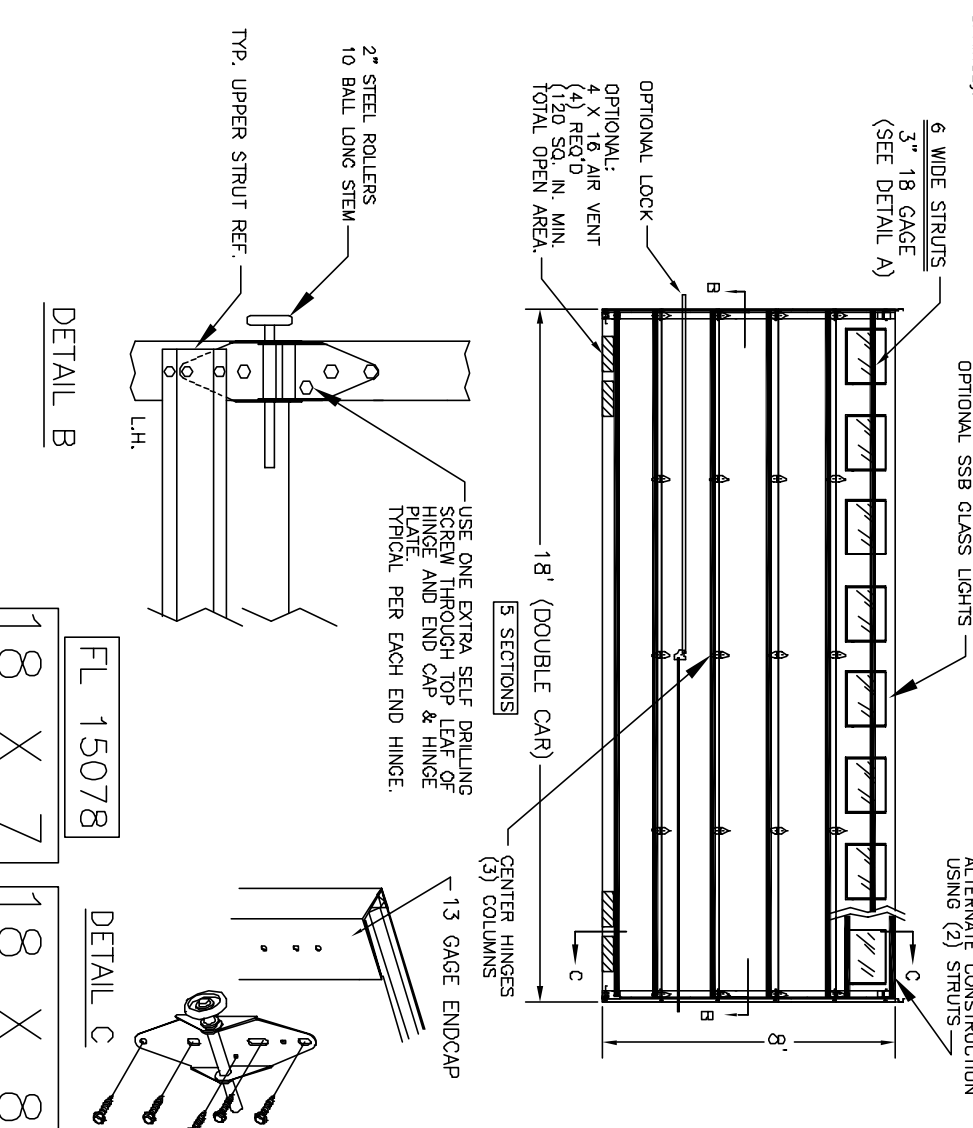
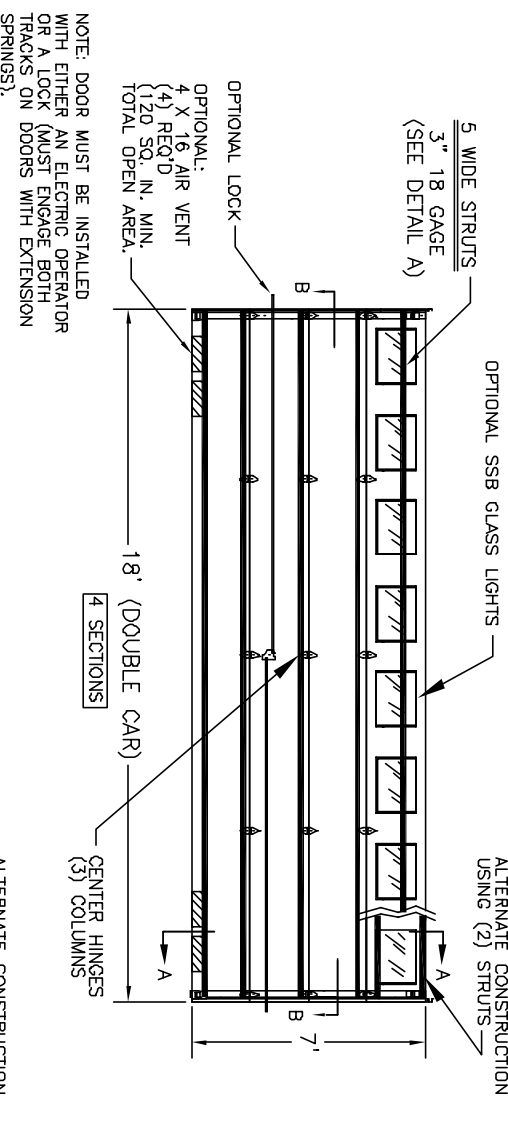
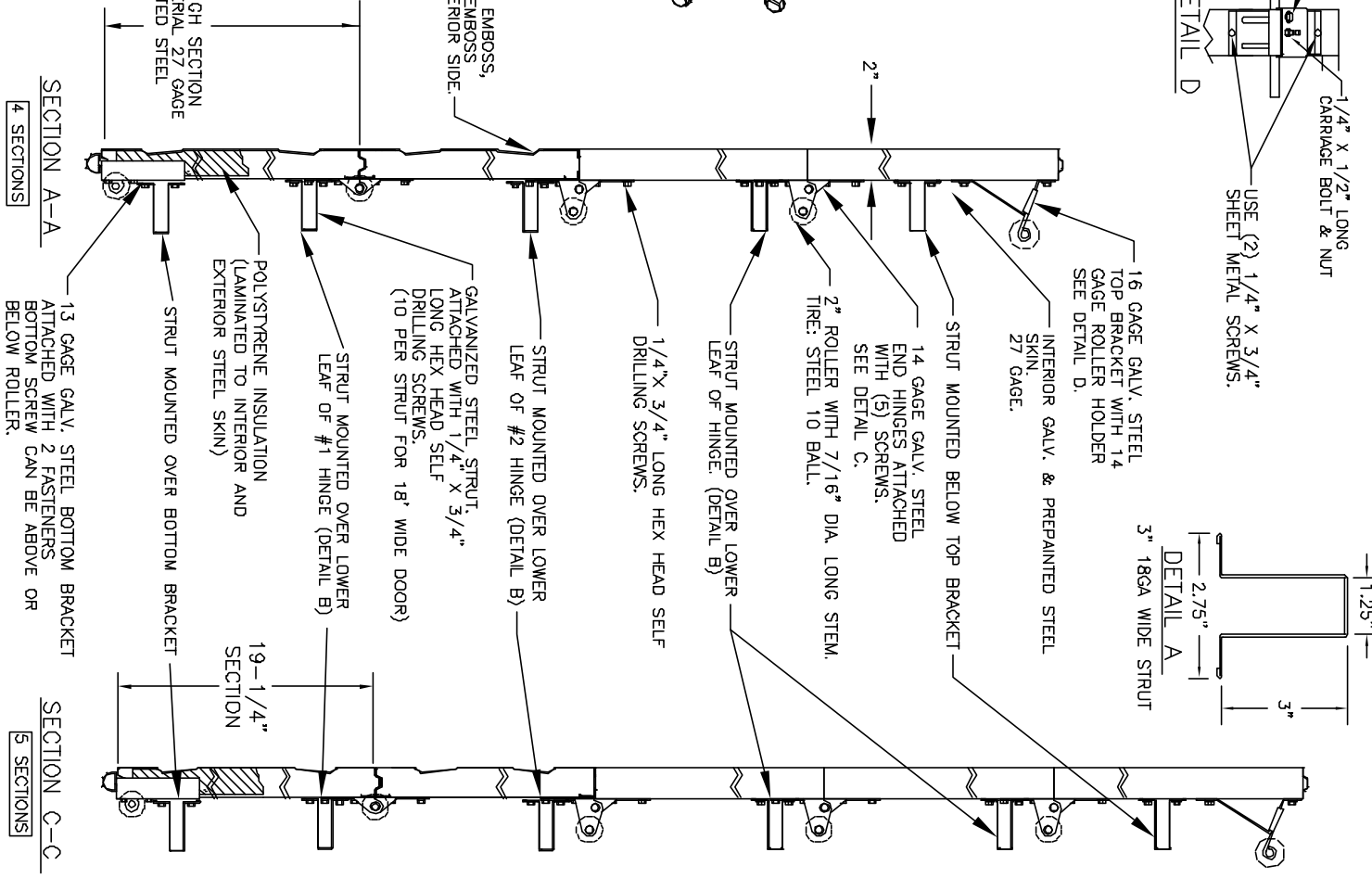
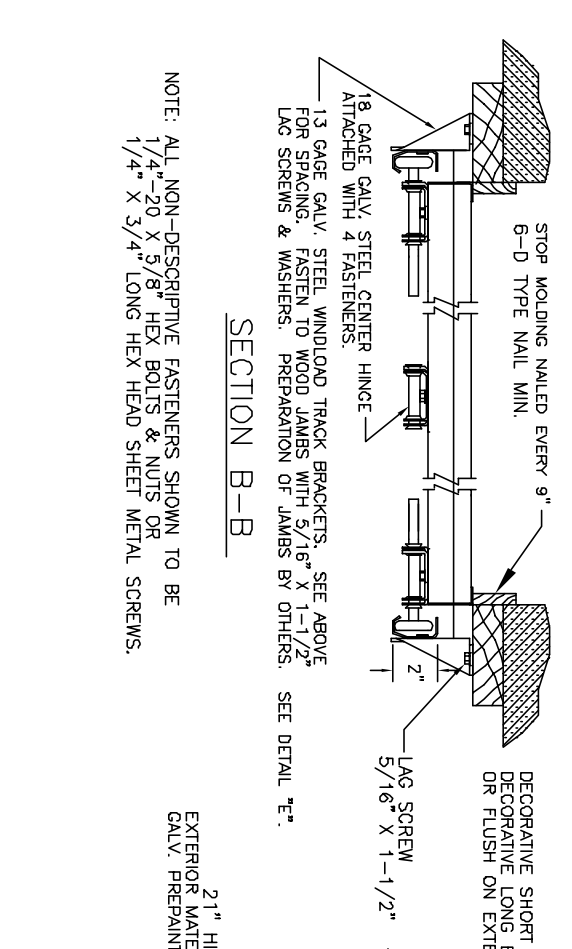
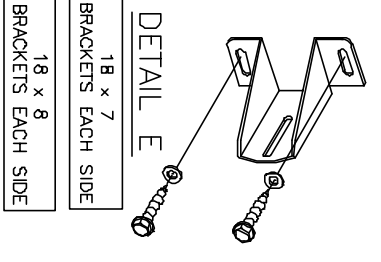
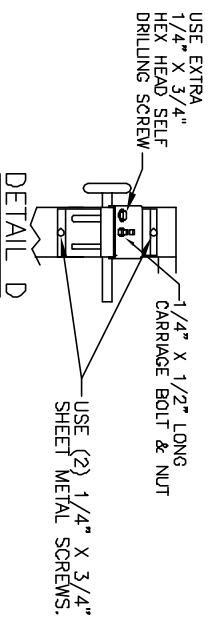
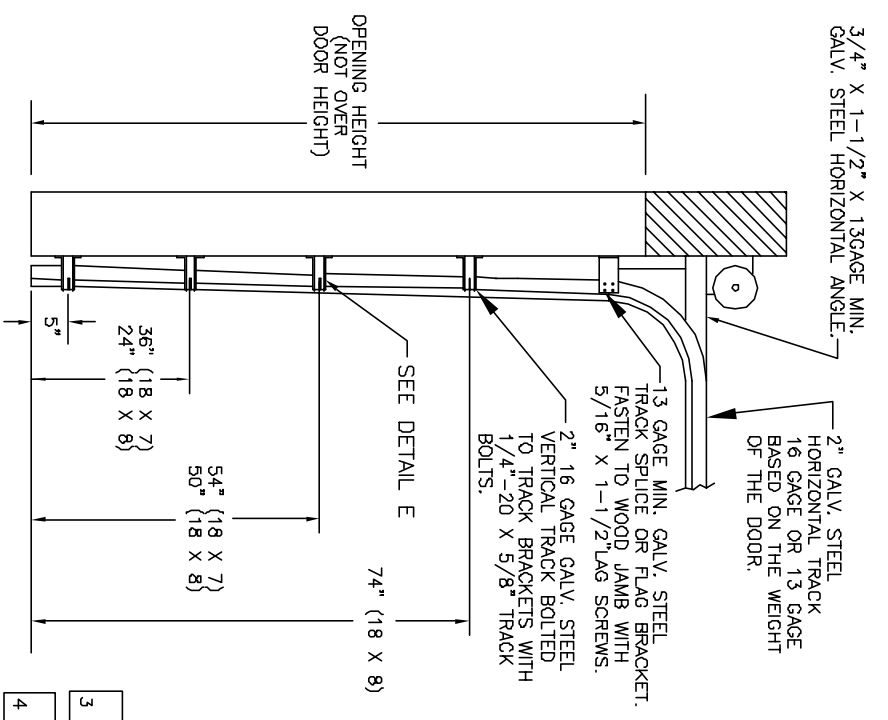
SCALE NONE

DATE: 11/1/07

DRN. BY BH

DWG. NO. 99-B-085

P.O. BOX 8915
LITTLE ROCK, AR
72219-8915
(501) 562-1872



P.S.F. TABLE

DOOR SIZE	DESIGN PRESSURE	TEST PRESSURE			
WIDTH	HEIGHT	POSITIVE	NEGATIVE	POSITIVE	NEGATIVE
18'-0"	7'-0"	+18.7	-20.8	+28.1	-31.2
18'-0"	8'-0"	+18.7	-20.8	+28.1	-31.2

NOTE: ALL NON-DESCRIPTIVE FASTENERS SHOWN TO BE 1/4"-20 X 3/8" HEX BOLTS & NUTS OR 1/4" X 3/4" LONG HEX HEAD SHEET METAL SCREWS.

DOORS SHOWN ON THIS DRAWING HAVE BEEN DEMONSTRATED TO WITHSTAND THE PRESSURES LISTED IN THE TABLE ABOVE VIA TESTING TO ANSI/DASMA 108-05. DETERMINATION OF SUITABILITY FOR SPECIFIC SITES IS THE RESPONSIBILITY OF OTHERS.

John E. Scores PE
 3121 FAIRGATE DR
 Carrollton, TX 75007
 TX-PE 56308-F-2203
 FL-PE 49737
 (972) 492-9500

Professional Engineer's seal provided only for verification of window construction details.

NOTE: GLAZING DOES NOT SATISFY IMPACT DEBRIS REQUIREMENTS IN FBC

REV.	E.C.N.	DATE:	APPROV.
A	2866	3/10/08	RLB
B	2851	11/1/07	RLB

WINDSOR DOOR

MODELS: 790

DWG. WAS PART NAME: WINDLOAD RESIDENTIAL SANDWICH DOOR

TOLERANCE: W/1 B

FRAC. ± 1/64"
 DEC. ± .015
 ANG. ± 1'

SCALE: NONE

DATE: 11/1/07

DRN. BY: BH

DWG. NO.: 99-B-085

P.O. BOX 8915
 LITTLE ROCK, AR
 72219-8915
 (501) 562-1872

